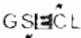



NOTES & DETAILS CABLING

FOR TENDERING ONLY

					 GUJARAT STATE ELECTRICITY CORPORATION LIMITED VADODARA, GUJARAT
					 DEVELOPMENT CONSULTANTS PVT. LTD. CONSULTING ENGINEERS KOLKATA . MUMBAI . CHENNAI . NEW DELHI
					TITLE: NOTES & DETAILS CABLING
					PROJECT: 1x800 MW SUPERCRITICAL THERMAL POWER PLANT (UNIT #8 AT WANAKBORI THERMAL POWER STATION, GUJARAT)
SKB	MS	BR	0	04.07.12	JOB NO. K9213R SCALE : NTS
APPVD.	REVWD.	CHKD.	REV.	DATE	DWG. NO. K9213R-DWG-E-0400 REV. <div style="display: flex; justify-content: space-between;"> SHT. - COVER 0 </div>

1. All the cable tray installation and cabling work will be carried out as per the following drawings and document of respective areas :

- i) Equipment and Cabling Layout.
- i) Grounding Layout.
- ii) Cable Schedule and inter-connection Chart.

In the above layout drawings, the main routing of cable trays/trenches are shown upto nearest point of any equipment. Local routing of cable trays/cables (from above main routing) upto respective equipment will be decided by the electrical erection contractor at site.

2.a) Except at panels/enclosure, the conduit ends shall be sealed by suitable sealing compound, having fire withstand capability.

b) Cables laid on trays and risers shall be clamped at an interval of 1500mm and 900mm for horizontal & vertical cable runs respectively.

c) All single core power cables shall be laid in trifoil formation and suitably clamped.

3. Based on the drawings and details indicated above in this document, electrical erection contractor shall estimate and supply all necessary cable tray supports, conduits, clamps, hardwares, etc. to make the installation complete in all respect.

4. Typical arrangement of fixing cable trays in cable trenches/overhead are shown in this document. Electrical erection contractor will supply and install all necessary supporting steel structures for erection of cable trays.

5. Cables shall be laid as follows

On cable trays

In duct bank.

Directly burried (for street lighting only and as specified in the layout drawings)

6. Laying of Cables shall be carried out as per IS:1255. Cabling work shall comprise of the following as/or as stipulated in the specification :-

On Tray : laying, dressing, clamping of cables on tray, fixing of cable tag including supply of cable clamps, cable tags and fixing hardware. Trifoil clamps shall be provided for single core cables laid in trifoil arrangement.

Buried : excavation of earth, filling by sand, providing brick partition, laying and dressing of cable, fixing of cable tag, sand covering followed by fixing of precast cover, backfilling by good earth followed by coarse earth including the supply of cable tag, sand, brick, precast cover.

Shallow trench : laying, dressing, fixing of cable tag, filling with sand and fixing of brick column including supply of sand, brick and cable tag.

Duct bank : pulling of cable and fixing of cable tag.

FOR TENDERING ONLY

GSECL GUJARAT STATE ELECTRICITY CORPORATION LIMITED
VADODARA, GUJARAT



DEVELOPMENT CONSULTANTS PVT. LTD.
CONSULTING ENGINEERS
KOLKATA . MUMBAI . CHENNAI . NEW DELHI

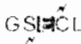

						TITLE: NOTES & DETAILS CABLING	JOB NO. K9213R	SCALE : NTS
						PROJECT: 1x800 MW SUPERCRITICAL THERMAL POWER PLANT (UNIT #8 AT WANAKBORI THERMAL POWER STATION, GUJARAT)	DWG. NO. K9213R-DWG-E-0400	REV. 0
SKB	MS	BR	0	04.07.12			SHT. 01	
APPVD.	REVVD.	CHKD.	REV.	DATE				

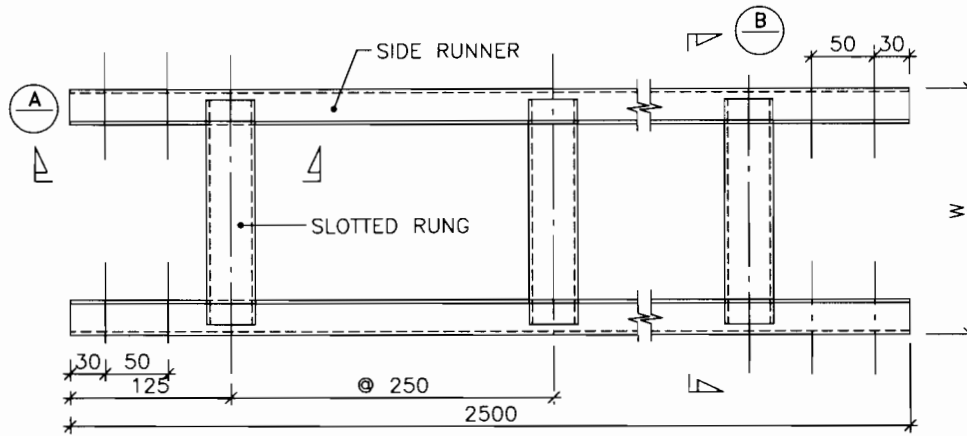
7. HT Multicore Power cables of same voltage grade shall be laid in a single row with D gap between cables where D is the largest dia. adjacent of cable and in case of singlecore cable laid in trefoil formation with a distance of four times. The dia. of cable between trefoil centre line and clamped at every 2m. LT Multicore Power cables shall be laid touching in a single row and singlecore cables to be laid in trefoil formation with a distance of four times. The dia. of the cable between trefoil centre lines and clamp every 2m. Control & Instrument cables shall be laid in multiple rows upto a maximum of three rows.
At least 300mm clearance shall be maintained between cables of different voltage grades & services like power, control and instrumentation.
The laying sequence of cable of various voltage levels shall be as follows (from top to bottom) :-

HT power cables
LT power cables
Control cables
Instrumentation & Communication system cables.

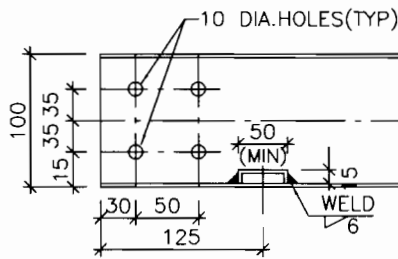
8. For Power cables clamping of adjacent cables on the same tray shall be staggered to avoid fouling of the clamping bolts.
9. Termination work shall be done in accordance with the stipulation of the specification including supply of lugs and glands for control cables.
10. Armour/screen of multi-core cables shall be grounded at both ends. Armour/screen of single core cables shall be grounded only at source end.
11. Indelible identification tags shall be provided for all cables at all terminations just before entering the equipment enclosure, on both side of a wall or floor crossing, on each duct/conduit entry and at every twenty metres in cable tray/trench. Cable trays along a route shall also be systematically numbered and marked to ensure cable laying according to cable schedules. Beside having identification/designation at each end of cable way and branch connection, long length of trays shall have identification at every 10 metres.
12. Whenever cables pass through walls or floors, fire proof penetration seals rated for 90 min. shall be provided.
13. Street lighting cables shall be routed buried and at road crossings lighting cables shall pass through 150mm dia. hume pipes(Class NP-3) Above pipes shall be installed at a min. depth of 1000mm from ground level.
14. RCC trenches, Pull pits & Hand holes in Hazardous area shall be filled up with sand after cable laying.
15. No cable joints are permitted for cable runs less than 500m.
16. Earthing of cable trays shall be provided as per Dwg. no. K9213-DWG-E-0600.

FOR TENDERING ONLY

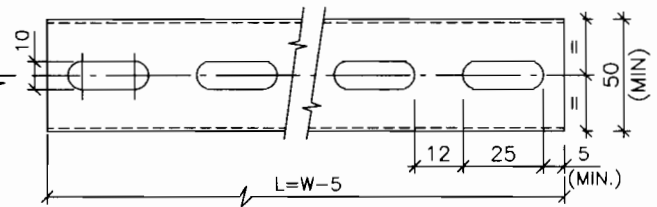
					 GUJARAT STATE ELECTRICITY CORPORATION LIMITED VADODARA, GUJARAT
					 DEVELOPMENT CONSULTANTS PVT. LTD. CONSULTING ENGINEERS KOLKATA . MUMBAI . CHENNAI . NEW DELHI
TITLE: NOTES & DETAILS CABLING					JOB NO. K9213R SCALE : NTS
PROJECT: 1x800 MW SUPERCRITICAL THERMAL POWER PLANT (UNIT #8 AT WAMAKBORI THERMAL POWER STATION, GUJARAT)					DWG. NO. K9213R-DWG-E-0400 REV. 0
SKB	MS	BR	0	04.07.12	SHT. 02
APPVD.	REVWD.	CHKD.	REV.	DATE	0



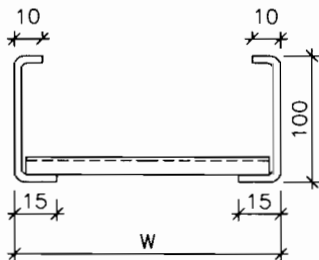
LADDER TYPE CABLE TRAY



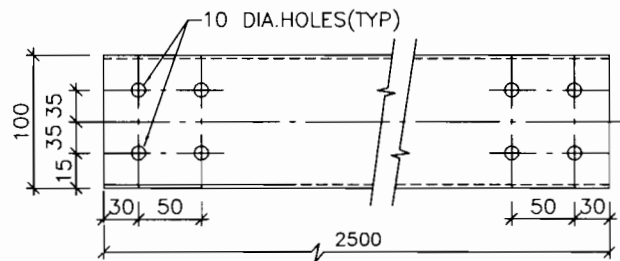
SEC - A



SLOTTED RUNG



SEC - B



SIDE RUNNER

W	300	450	600	900
L	295	445	595	895

MATERIAL : M.S. SHEET 14 SWG.(2mm.THK.)
FINISH : HOT DIP GALVANISED

NOTE :-

1. ALL DIMENSIONS ARE IN MM.

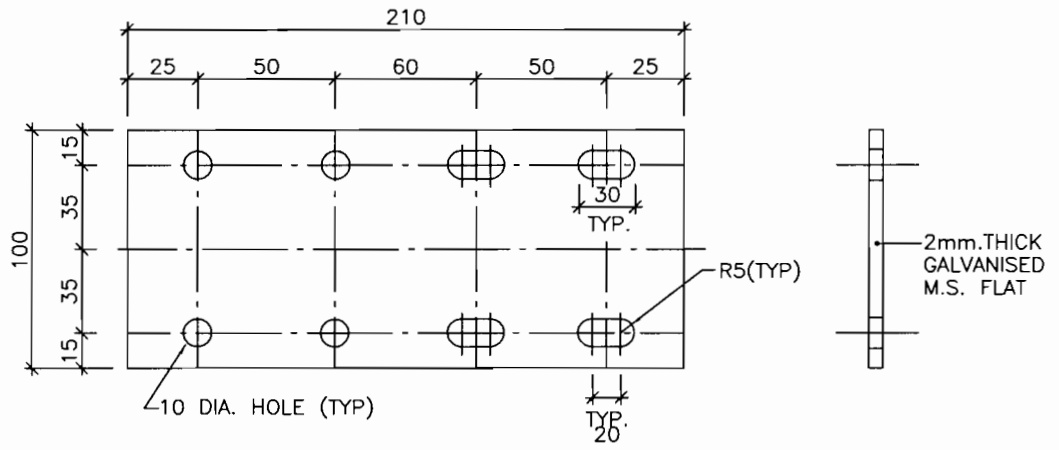
FOR TENDERING ONLY

GUJARAT STATE ELECTRICITY CORPORATION LIMITED
VADODARA, GUJARAT

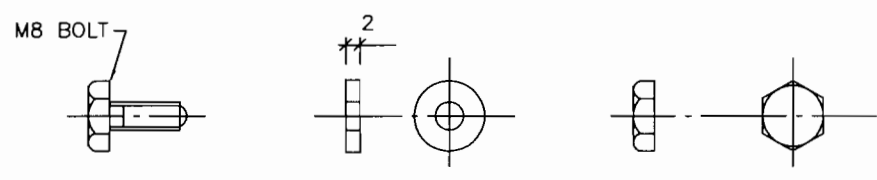
DEVELOPMENT CONSULTANTS PVT. LTD.
CONSULTING ENGINEERS
KOLKATA . MUMBAI . CHENNAI . NEW DELHI

					TITLE: NOTES & DETAILS CABLING
					PROJECT: 1x800 MW SUPERCRITICAL THERMAL POWER PLANT (UNIT #8 AT WANAKBORI THERMAL POWER STATION, GUJARAT)
SKB	MS	BR	0	04.07.12	
APPVD.	REVWD.	CHKD.	REV.	DATE	

JOB NO.	K9213R	SCALE :	NTS
DWG. NO.	K9213R-DWG-E-0400	REV.	0
		SHT.	03



SIDE COUPLER PLATE



M8 BOLT, WASHER & NUT
(FOR CABLE TRAY JOINT)

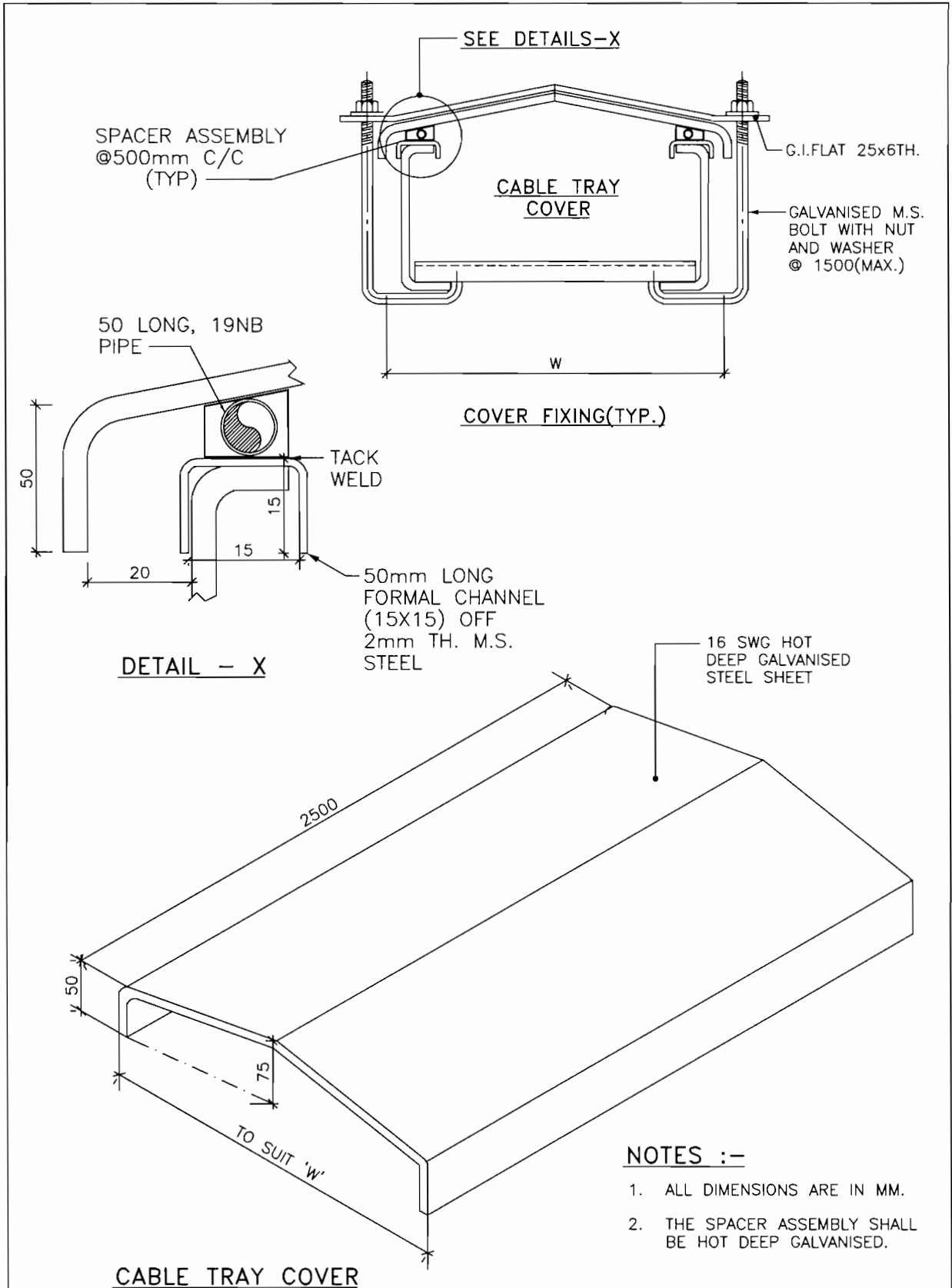
NOTE :-

1. ALL DIMENSIONS ARE IN MM.

FOR TENDERING ONLY

					GUJARAT STATE ELECTRICITY CORPORATION LIMITED VADODARA, GUJARAT	
					DEVELOPMENT CONSULTANTS PVT. LTD. CONSULTING ENGINEERS KOLKATA . MUMBAI . CHENNAI . NEW DELHI	
TITLE: NOTES & DETAILS CABLING					JOB NO. K9213R	SCALE : NTS
PROJECT: 1x800 MW SUPERCRITICAL THERMAL POWER PLANT (UNIT #8 AT WANAKBORI THERMAL POWER STATION, GUJARAT)					DWG. NO. K9213R-DWG-E-0400	REV. 0
SKB	MS	BR	0	04.07.12		
APPVD.	REVWD.	CHKD.	REV.	DATE		SHT. 04

A4_DD (9-96) [210x297]



FOR TENDERING ONLY

GSECL GUJARAT STATE ELECTRICITY CORPORATION LIMITED
VADODARA, GUJARAT

SKB	MS	BR	0	04.07.12
APPVD.	REVWD.	CHKD.	REV.	DATE

TITLE: NOTES & DETAILS
CABLING

PROJECT:
1x800 MW SUPERCRITICAL THERMAL POWER PLANT
(UNIT #8 AT WANAKBORI THERMAL POWER STATION, GUJARAT)

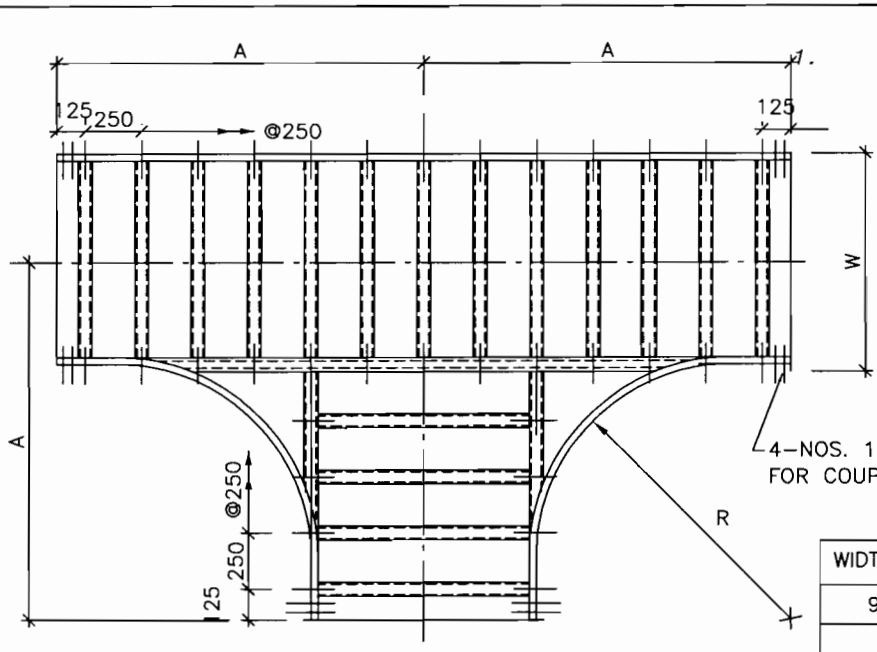
DEVELOPMENT CONSULTANTS PVT. LTD.
CONSULTING ENGINEERS
KOLKATA . MUMBAI . CHENNAI . NEW DELHI

JOB NO. K9213R SCALE : NTS

DWG. NO. K9213R-DWG-E-0400 REV. 0

SHT. 05

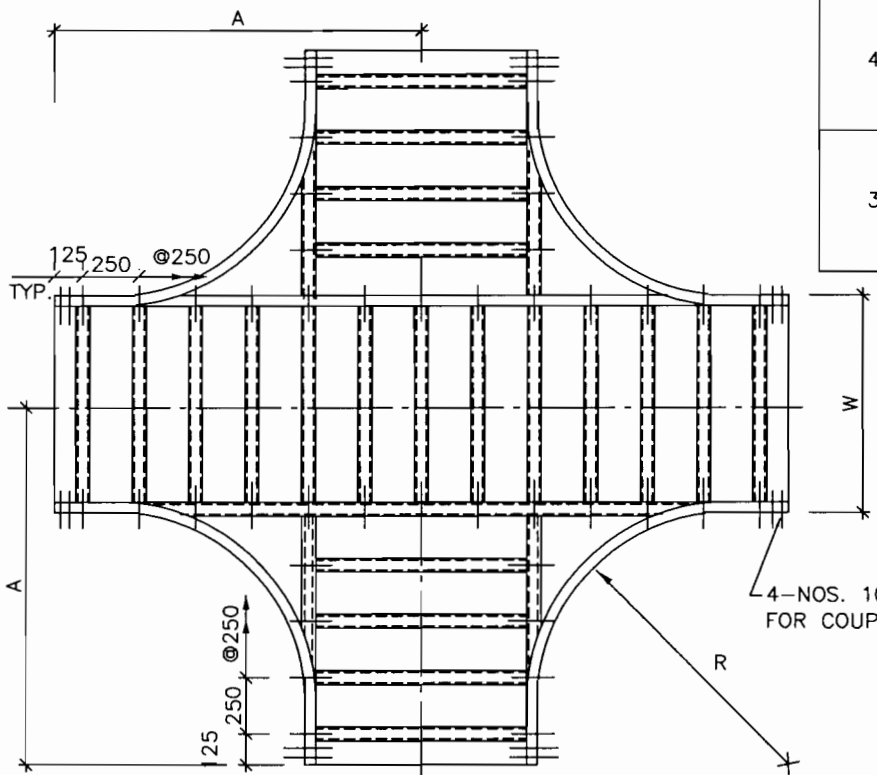
A4_DD (9-96) [210x297]



**PLAN
HORIZONTAL TEE**

4-NOS. 10DIA. HOLES(TYP)
FOR COUPLER PLATE

WIDTH (W)	RADIUS (R)	A
900	1450	2025
600	1050	1475
	600	1025
	450	875
	300	725
450	1050	1400
	600	950
	450	800
300	1050	1325
	600	875
	450	725
	300	575



**PLAN
HORIZONTAL CROSS**

4-NOS. 10 DIA. HOLES(TYP)
FOR COUPLER PLATE

NOTES :-

1. ALL DIMENSIONS ARE IN MM.
2. FOR MULTITIER CABLE TRAY, THE BENDING RADIUS AT THE BENDS SHALL BE SAME FOR ALL TRAYS AND THIS RADIUS SHALL BE AS PER THE RECOMMENDED BENDING RADIUS OF LARGEST CABLE IN THE ROUTE.

FOR TENDERING ONLY

SKB	MS	BR	0	04.07.12
APPVD.	REVWD.	CHKD.	REV.	DATE

TITLE: NOTES & DETAILS
CABLING

PROJECT:
1x800 MW SUPERCRITICAL THERMAL POWER PLANT
(UNIT #8 AT WANAKBORI THERMAL POWER STATION, GUJARAT)

GSECL
GUJARAT STATE ELECTRICITY CORPORATION LIMITED
VADODARA, GUJARAT

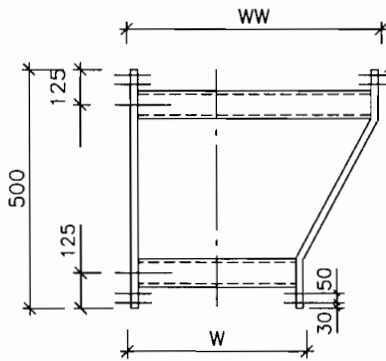
DEVELOPMENT CONSULTANTS PVT. LTD.
CONSULTING ENGINEERS
KOLKATA . MUMBAI . CHENNAI . NEW DELHI

JOB NO. K9213R SCALE : NTS

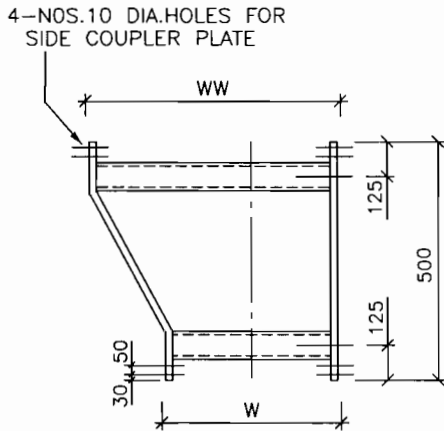
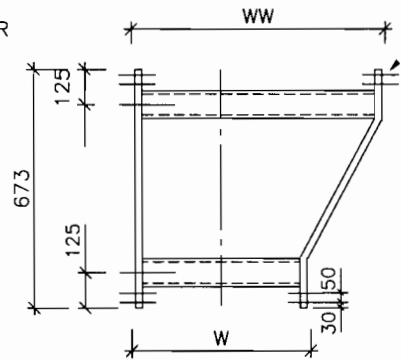
DWG. NO. K9213R-DWG-E-0400 REV. 0

SHT. 06

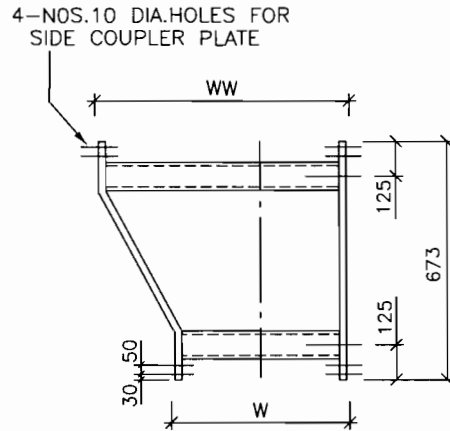
A4_DD (9-96) [210x297]



PLAN
LEFT HAND REDUCER



PLAN
RIGHT HAND REDUCER



WIDTH	WW	900	600	600	450
	W	600	450	300	300

NOTE :-

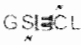

1. ALL DIMENSIONS ARE IN MM.

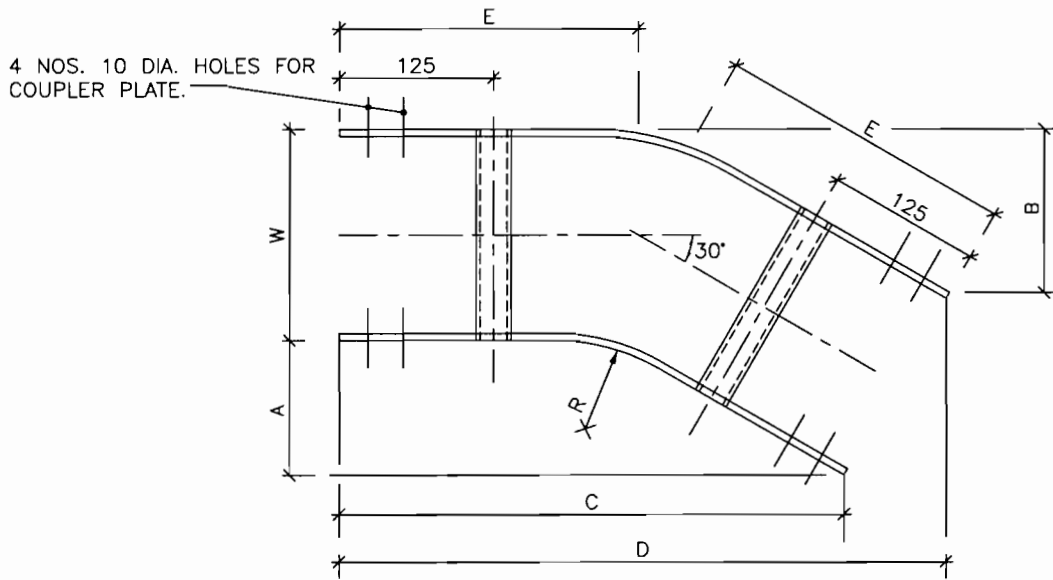
FOR TENDERING ONLY

SKB	MS	BR	0	04.07.12
APPVD.	REVWD.	CHKD.	REV.	DATE

TITLE: NOTES & DETAILS
CABLING

PROJECT:
1x800 MW SUPERCRITICAL THERMAL POWER PLANT
(UNIT #8 AT WANAKBORI THERMAL POWER STATION, GUJARAT)

 GUJARAT STATE ELECTRICITY CORPORATION LIMITED VADODARA, GUJARAT	
 DEVELOPMENT CONSULTANTS PVT. LTD. CONSULTING ENGINEERS KOLKATA . MUMBAI . CHENNAI . NEW DELHI	
JOB NO. K9213R	SCALE : NTS
DWG. NO. K9213R-DWG-E-0400	REV. 0
SHT. 07	





PLAN
30° HORIZONTAL ELBOW

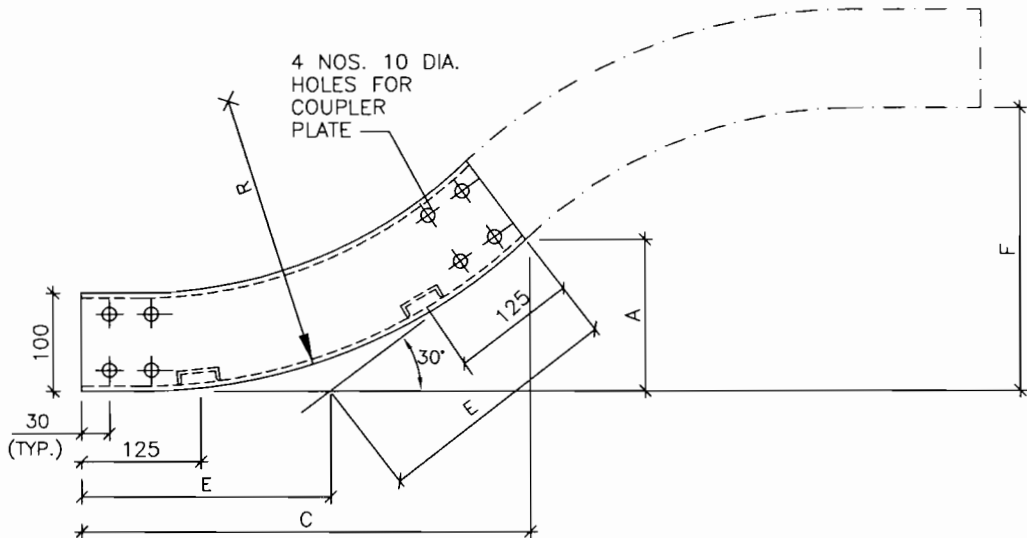
WIDTH (W)	RADIUS (R)	A	B	C	D	E
900	1450	257	380	960	1410	635
600	1050	205	285	755	1055	485
	600	145	225	530	830	365
	450	125	205	455	755	325
	300	105	185	380	680	285
450	1050	205	265	755	980	465
	600	145	205	530	755	345
	450	125	185	455	680	305
	300	105	165	380	605	265
300	1050	205	245	755	905	445
	600	145	185	530	680	325
	450	125	165	455	605	285
	300	105	145	380	530	245

NOTE :-

1. ALL DIMENSIONS ARE IN MM.

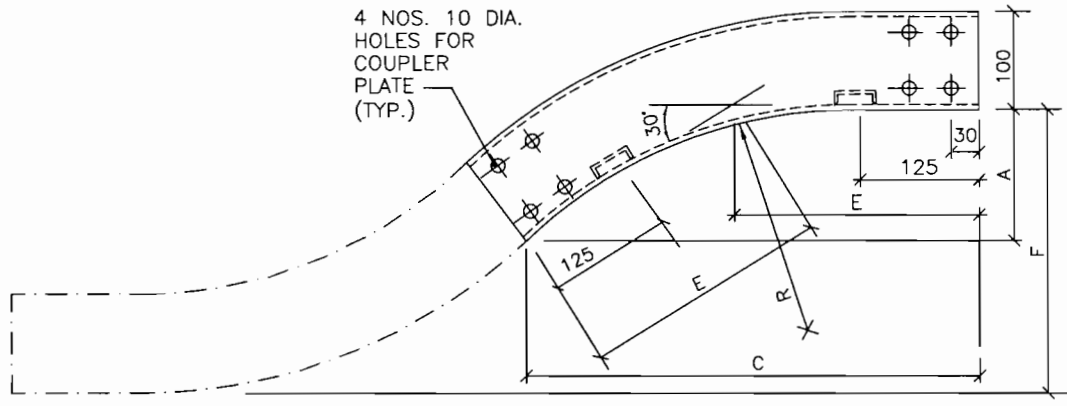
FOR TENDERING ONLY

					 GUJARAT STATE ELECTRICITY CORPORATION LIMITED VADODARA, GUJARAT
					 DEVELOPMENT CONSULTANTS PVT. LTD. CONSULTING ENGINEERS KOLKATA . MUMBAI . CHENNAI . NEW DELHI
TITLE: NOTES & DETAILS CABLING					JOB NO. K9213R SCALE : NTS
PROJECT: 1x800 MW SUPERCRITICAL THERMAL POWER PLANT (UNIT #8 AT WANAKBORI THERMAL POWER STATION, GUJARAT)					DWG. NO. K9213R-DWG-E-0400 REV. 0 SHT. 08
SKB	MS	BR	0	04.07.12	
APPVD.	REVWD.	CHKD.	REV.	DATE	



ELEVATION
30° VERTICAL ELBOW (INSIDE)

WIDTH(W)	RADIUS(R)	A	C	E	F
600	1050	205	760	410	410
450	600	145	535	290	290
&					
300	450	125	460	250	250
	300	105	385	210	210




ELEVATION
30° VERTICAL ELBOW (OUTSIDE)

FOR TENDERING ONLY

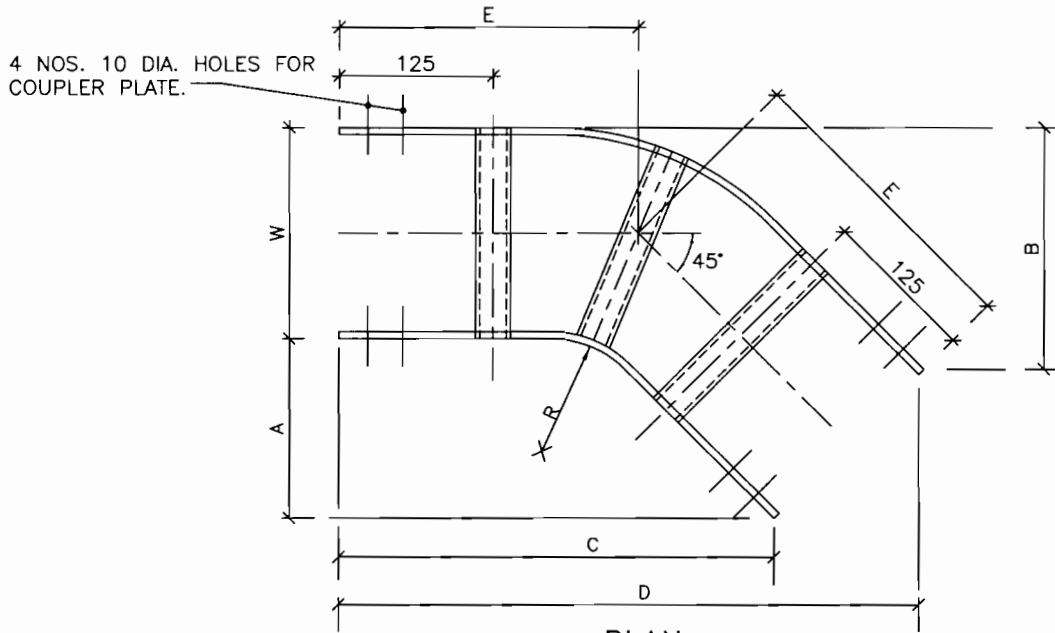
NOTE :-

- ALL DIMENSIONS ARE IN MM.

GSECL GUJARAT STATE ELECTRICITY CORPORATION LIMITED
VADODARA, GUJARAT

					TITLE: NOTES & DETAILS CABLING	 DEVELOPMENT CONSULTANTS PVT. LTD. CONSULTING ENGINEERS KOLKATA . MUMBAI . CHENNAI . NEW DELHI	
SKB	MS	BR	0	04.07.12	PROJECT:	JOB NO. K9213R	SCALE : NTS
APPVD.	REVWD.	CHKD.	REV.	DATE	1x800 MW SUPERCRITICAL THERMAL POWER PLANT (UNIT #8 AT WANAKBORI THERMAL POWER STATION, GUJARAT)	DWG. NO. K9213R-DWG-E-0400	REV. SHT. 09
							0

A4_DD (9-96) [210x297]



PLAN
45° HORIZONTAL ELBOW

WIDTH (W)	RADIUS (R)	A	B	C	D	E
900	1450	515	780	1240	1875	910
600	1050	395	570	955	1380	685
	600	265	440	640	1065	535
	450	220	395	530	955	470
	300	175	350	425	850	410
450	1050	395	530	955	1275	690
	600	265	395	640	955	500
	450	220	350	530	850	440
	300	175	310	425	745	390
300	1050	395	485	955	1165	655
	600	265	350	640	850	470
	450	220	310	530	745	410
	300	175	265	425	635	345

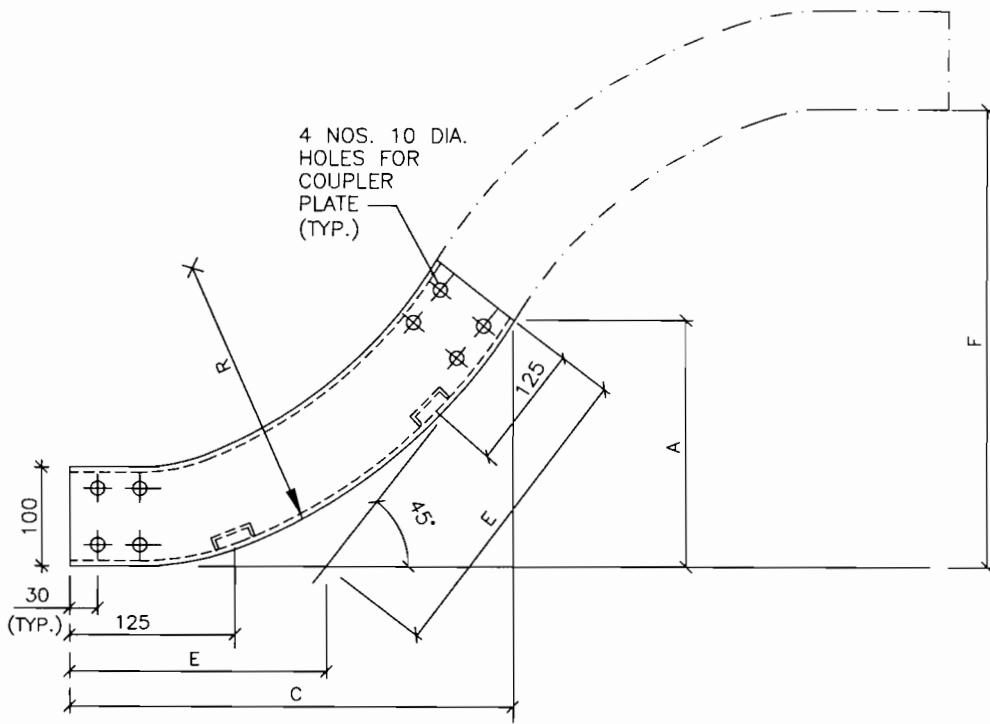
FOR TENDERING ONLY

NOTE :-

ALL DIMENSIONS ARE IN MM.

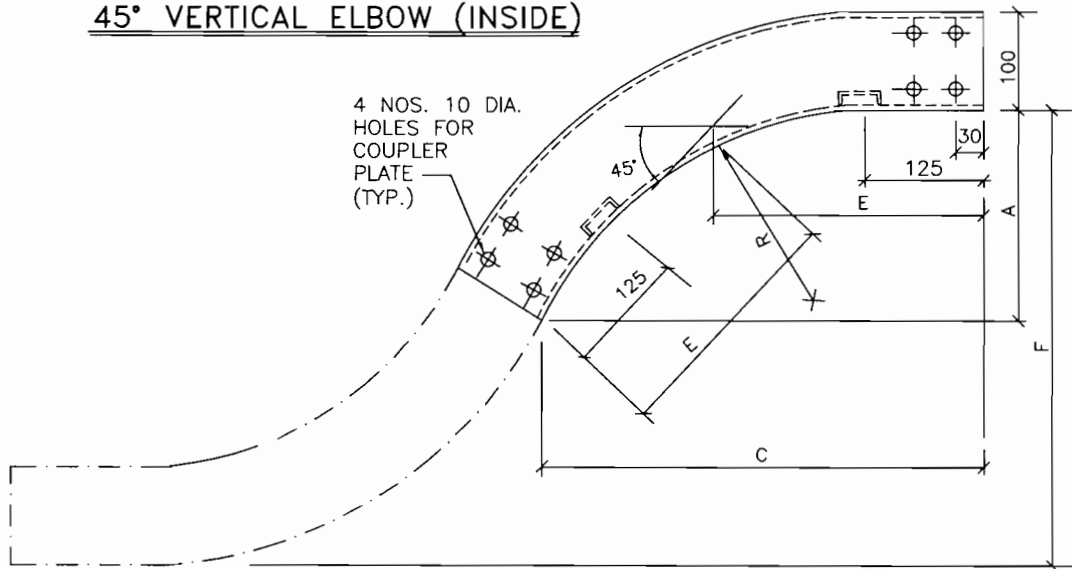
GSECL GUJARAT STATE ELECTRICITY CORPORATION LIMITED
VADODARA, GUJARAT

					TITLE: NOTES & DETAILS CABLING		DEVELOPMENT CONSULTANTS PVT. LTD. CONSULTING ENGINEERS KOLKATA . MUMBAI . CHENNAI . NEW DELHI	
SKB	MS	BR	0	04.07.12	PROJECT: 1x800 MW SUPERCRITICAL THERMAL POWER PLANT (UNIT #8 AT WANAKBORI THERMAL POWER STATION, GUJARAT)		JOB NO. K9213R	SCALE : NTS
APPVD.	REVWD.	CHKD.	REV.	DATE			DWG. NO. K9213R-DWG-E-0400	REV. 0
							SHT. 10	0



ELEVATION

45° VERTICAL ELBOW (INSIDE)



ELEVATION

45° VERTICAL ELBOW (OUTSIDE)

WIDTH(W)	RADIUS(R)	A	C	E	F
900	1450	515	1240	725	865
600	1050	395	955	560	790
450	600	265	640	375	530
& 300	450	220	530	310	440
	300	175	425	250	350

NOTE :-

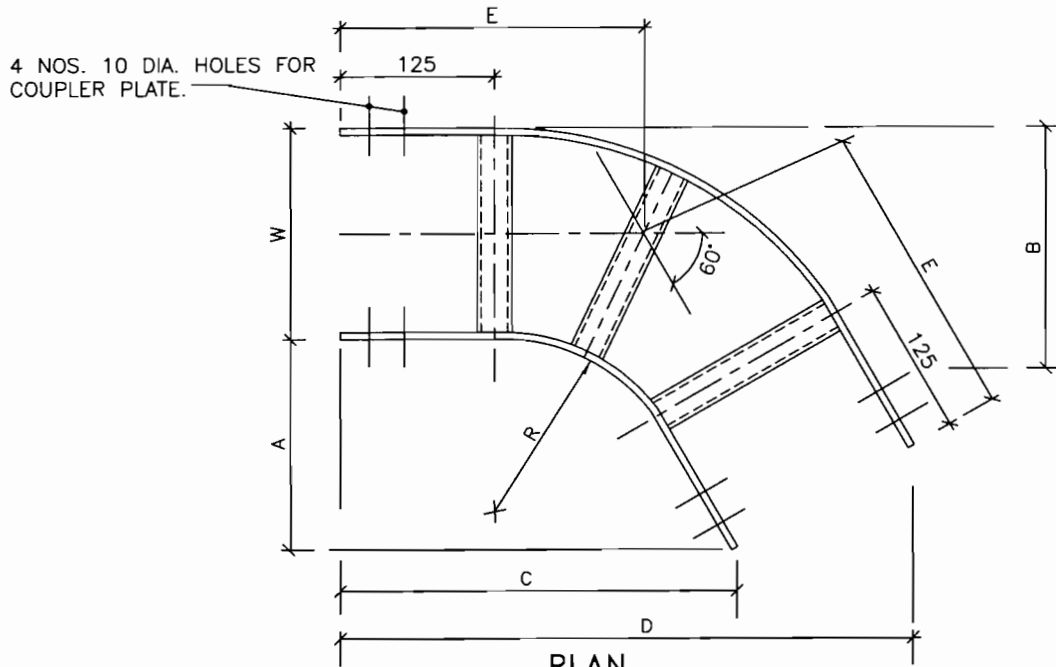
1. ALL DIMENSIONS ARE IN MM.

FOR TENDERING ONLY

GS ECL. GUJARAT STATE ELECTRICITY CORPORATION LIMITED
VADODARA, GUJARAT

DEVELOPMENT CONSULTANTS PVT. LTD.
CONSULTING ENGINEERS
KOLKATA . MUMBAI . CHENNAI . NEW DELHI

					TITLE: NOTES & DETAILS CABLING			
					PROJECT: 1x800 MW SUPERCRITICAL THERMAL POWER PLANT (UNIT #8 AT WANAKBORI THERMAL POWER STATION, GUJARAT)		JOB NO. K9213R	
SKB	MS	BR	0	04.07.12			SCALE : NTS	
APPVD.	REVWD.	CHKD.	REV.	DATE			DWG. NO. K9213R-DWG-E-0400	
							REV. 0	
							SHT. 11	



PLAN
60° HORIZONTAL ELBOW

WIDTH (W)	RADIUS (R)	A	B	C	D	E
900	1450	850	850	1470	1990	850
600	1050	635	935	1095	1615	905
	600	410	710	705	1225	645
	450	335	635	575	1095	560
	300	250	550	450	965	470
450	1050	635	860	1095	1485	860
	600	410	635	705	1095	600
	450	335	550	575	965	515
	300	250	485	450	835	425
300	1050	635	785	1095	1355	815
	600	410	560	705	965	555
	450	335	485	575	835	470
	300	250	410	450	705	385

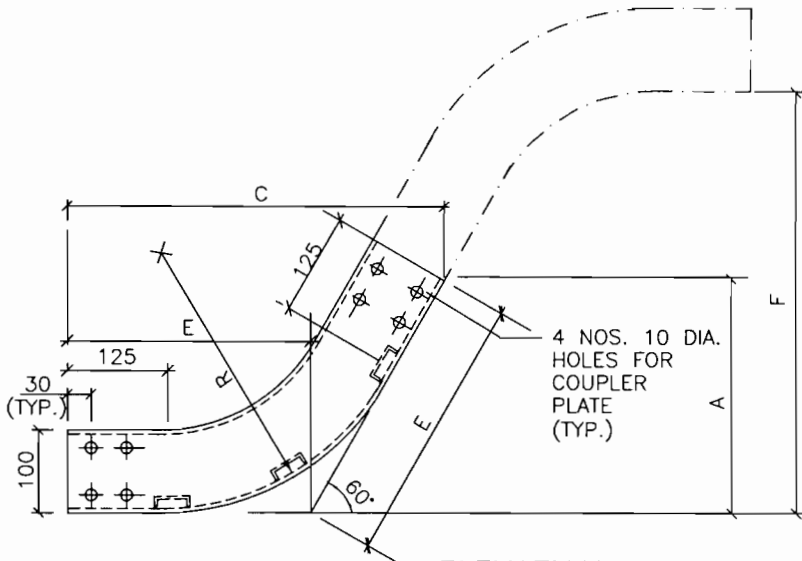
NOTE :-

1. ALL DIMENSIONS ARE IN MM.

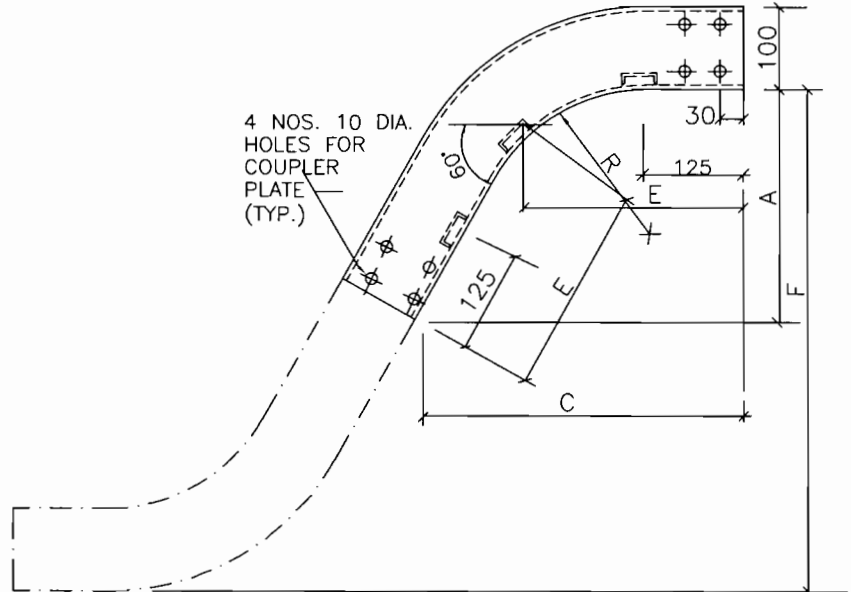
FOR TENDERING ONLY

GSECL GUJARAT STATE ELECTRICITY CORPORATION LIMITED
VADODARA, GUJARAT

					TITLE: NOTES & DETAILS CABLING		DEVELOPMENT CONSULTANTS PVT. LTD. CONSULTING ENGINEERS KOLKATA . MUMBAI . CHENNAI . NEW DELHI	
					PROJECT: 1x800 MW SUPERCRITICAL THERMAL POWER PLANT (UNIT #8 AT WANAKBORI THERMAL POWER STATION, GUJARAT)		JOB NO. K9213R SCALE : NTS	
SKB	MS	BR	0	04.07.12			DWG. NO. K9213R-DWG-E-0400 REV. 0	
APPVD.	REVWD.	CHKD.	REV.	DATE			SHT. 12	



ELEVATION
60° VERTICAL ELBOW (INSIDE)



ELEVATION
60° VERTICAL ELBOW (OUTSIDE)

WIDTH(W)	RADIUS(R)	A	C	E	F
600	1050	635	1095	730	1270
450	600	410	705	470	820
&	450	335	575	385	670
300	300	260	450	300	520

NOTE :-

1. ALL DIMENSIONS ARE IN MM.

FOR TENDERING ONLY

GSECL
GUJARAT STATE ELECTRICITY CORPORATION LIMITED
VADODARA, GUJARAT



DEVELOPMENT CONSULTANTS PVT. LTD.
CONSULTING ENGINEERS
KOLKATA . MUMBAI . CHENNAI . NEW DELHI

SKB	MS	BR	0	04.07.12
APPVD.	REVWD.	CHKD.	REV.	DATE

TITLE: NOTES & DETAILS
CABLING

PROJECT:
1x800 MW SUPERCRITICAL THERMAL POWER PLANT
(UNIT #8 AT WANAKBORI THERMAL POWER STATION, GUJARAT)

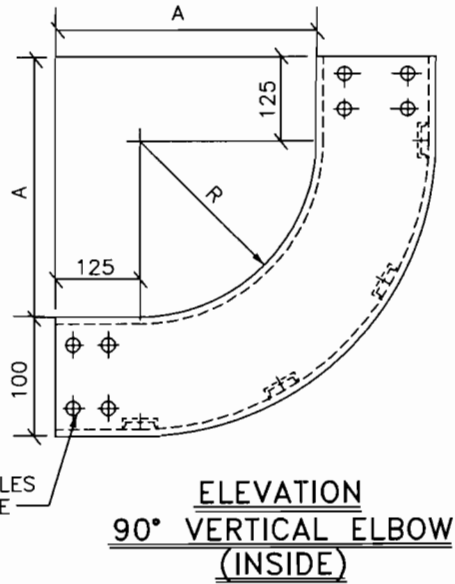
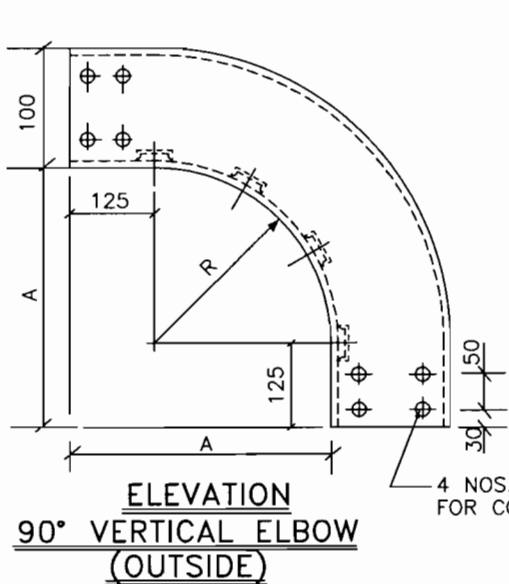
JOB NO. K9213R

SCALE : NTS

DWG. NO. K9213R-DWG-E-0400

SHT. 13

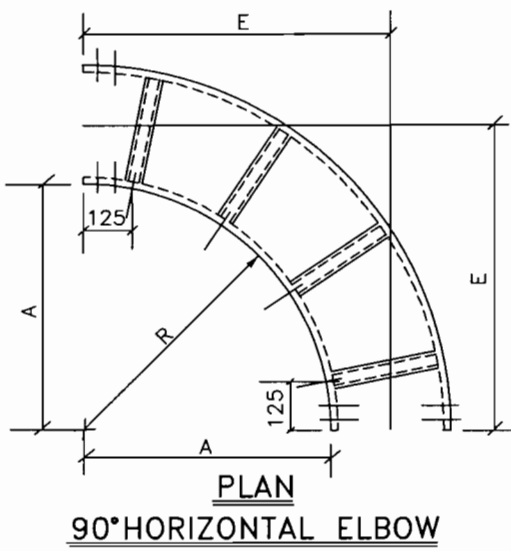
REV.
0



4 NOS. 10 DIA. HOLES FOR COUPLER PLATE

VERTICAL ELBOW		
WIDTH (W)	RADIUS (R)	A
900	1450	2025
600	1050	1175
450	600	725
&	450	575
300	300	425

HORIZONTAL ELBOW			
WIDTH (W)	RADIUS (R)	A	E
900	1450	2050	2500
600	1050	1175	1475
	600	725	1025
	450	575	875
450	300	425	725
	1050	1175	1400
	600	725	950
300	450	575	800
	300	425	650
	1050	1175	1325
300	600	725	875
	450	575	725
	300	425	575



NOTES :-

1. ALL DIMENSIONS ARE IN MM.
2. FOR MULTITIER CABLE TRAY, THE BENDING RADIUS AT THE BENDS SHALL BE SAME FOR ALL TRAYS AND THIS RADIUS SHALL BE AS PER THE RECOMMENDED BENDING RADIUS OF LARGEST CABLE IN THE ROUTE

FOR TENDERING ONLY

GS ECL GUJARAT STATE ELECTRICITY CORPORATION LIMITED
VADODARA, GUJARAT

					TITLE: NOTES & DETAILS CABLING		DEVELOPMENT CONSULTANTS PVT. LTD. CONSULTING ENGINEERS KOLKATA . MUMBAI . CHENNAI . NEW DELHI	
					PROJECT: 1x800 MW SUPERCRITICAL THERMAL POWER PLANT (UNIT #8 AT WANAKBORI THERMAL POWER STATION, GUJARAT)		JOB NO. K9213R SCALE : NTS	
SKB	MS	BR	0	04.07.12			DWG. NO. K9213R-DWG-E-0400	
APPVD.	REVWD.	CHKD.	REV.	DATE			SHT. 14	
								REV. 0

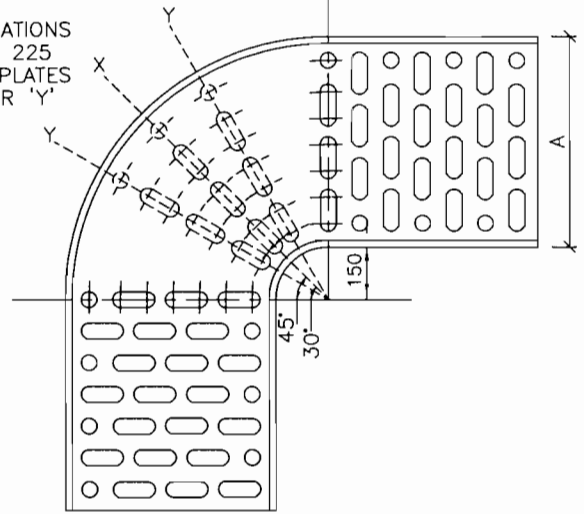
A4_DD (9-96) [210x297]

PERFORATION
PUNCHED FROM
THIS SIDE



END ELEVATION

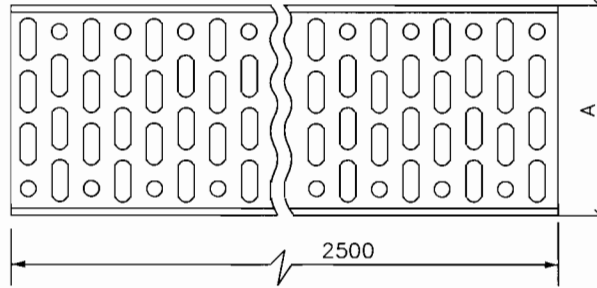
ADDITIONAL PERFORATIONS
REQUIRED ON 100, 225
& 300 MM WIDTH PLATES
ALONG LINES 'X' OR 'Y'



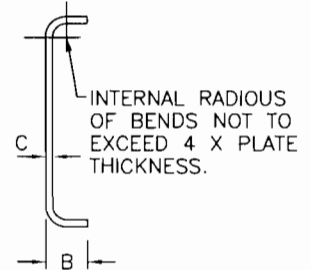
PLAN

90° HORIZONTAL ELBOW

DIMENSIONS IN MM	
WIDTH-A	DEPTH-B
100	50
150/225	
300	50

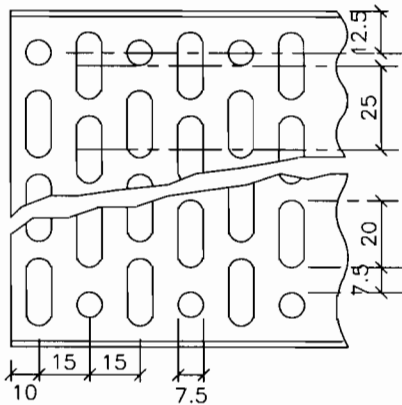


PLAN



END ELEVATION

STRAIGHT LENGTH



DETAILS OF PERFORATION

NOTES :

1. ALL CUTTING & FORMING OPERATIONS TO BE COMPLETED PRIOR TO GALVANIZING.
2. FINISHED TRAYS TO BE FREE FROM BURRS AND SHARP EDGES.
3. ALL DIMENSIONS ARE IN MM.

PERFORATED TYPE CABLE TRAY

GSECL GUJARAT STATE ELECTRICITY CORPORATION LIMITED
VADODARA, GUJARAT



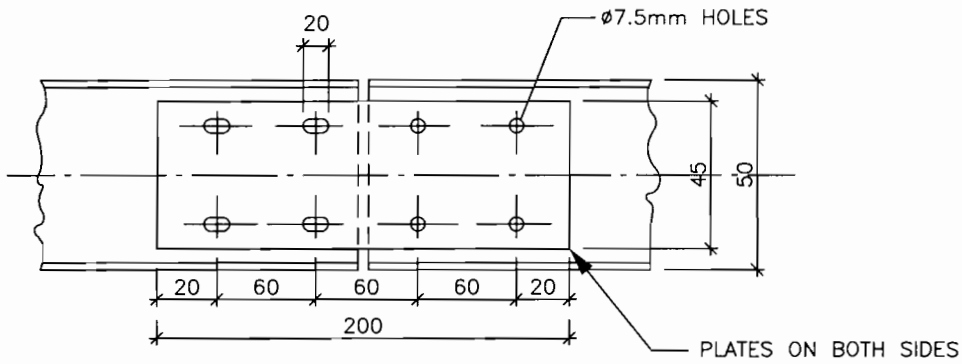
DEVELOPMENT CONSULTANTS PVT. LTD.
CONSULTING ENGINEERS
KOLKATA . MUMBAI . CHENNAI . NEW DELHI

SKB	MS	BR	0	04.07.12
APPVD.	REVWD.	CHKD.	REV.	DATE

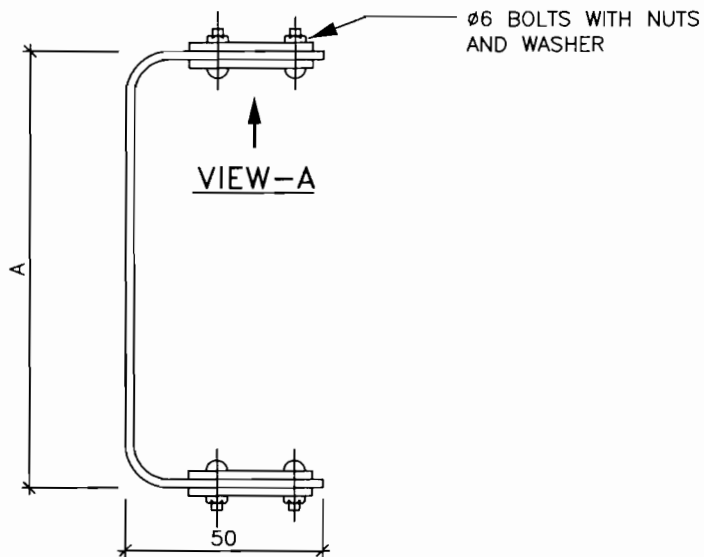
TITLE: NOTES & DETAILS
CABLING

PROJECT:
1x800 MW SUPERCRITICAL THERMAL POWER PLANT
(UNIT #B AT WANAKBORI THERMAL POWER STATION, GUJARAT)

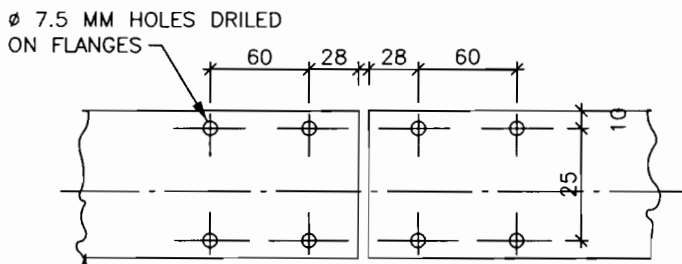
JOB NO. K9213R	SCALE : NTS
DWG. NO. K9213R-DWG-E-0400	REV. 0
SHT. 15	



VIEW-A



END ELEVATION



COUPLING PLATE

**PERFORATED TRAY JOINING BY
COUPLING PLATES**

NOTES:-

1. COUPLING PLATES 2 MM THICK M.S.
2. ALL DIMENSIONS ARE IN MM.

FOR TENDERING ONLY

GSECL GUJARAT STATE ELECTRICITY CORPORATION LIMITED
VADODARA, GUJARAT

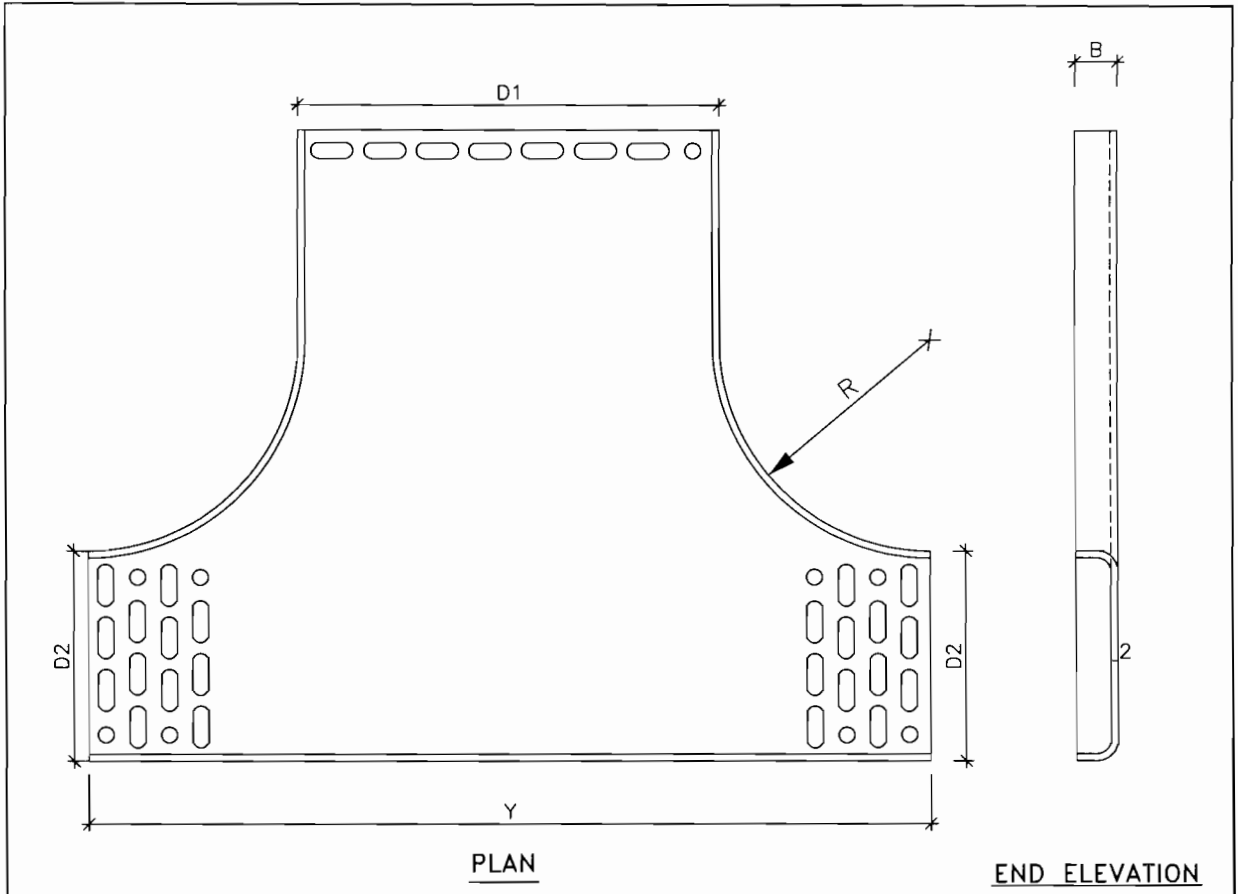
DEVELOPMENT CONSULTANTS PVT. LTD.
CONSULTING ENGINEERS
KOLKATA . MUMBAI . CHENNAI . NEW DELHI

SKB	MS	BR	0	04.07.12
APPVD.	REVWD.	CHKD.	REV.	DATE

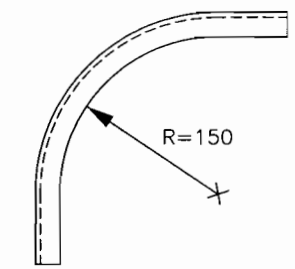
TITLE: NOTES & DETAILS
CABLING

PROJECT:
1x800 MW SUPERCRITICAL THERMAL POWER PLANT
(UNIT #8 AT WANAKBORI THERMAL POWER STATION, GUJARAT)

JOB NO. K9213R	SCALE : NTS
DWG. NO. K9213R-DWG-E-0400	REV. 0
SHT. 16	



HORIZONTAL TEE



VERTICAL ELBOW (90°)

TYPE	DIMENSIONS IN MM				
	D1	D2	B	R	Y
A	225	100	50	150	500
B	300	150	50	200	600

PERFORATED TRAY FITTINGS

FOR TENDERING ONLY

SKB	MS	BR	0	04.07.12
APPVD.	REVWD.	CHKD.	REV.	DATE

TITLE: NOTES & DETAILS CABLING
 PROJECT: 1x800 MW SUPERCRITICAL THERMAL POWER PLANT (UNIT #8 AT WANAKBORI THERMAL POWER STATION, GUJARAT)

GSECL GUJARAT STATE ELECTRICITY CORPORATION LIMITED
 VADODARA, GUJARAT

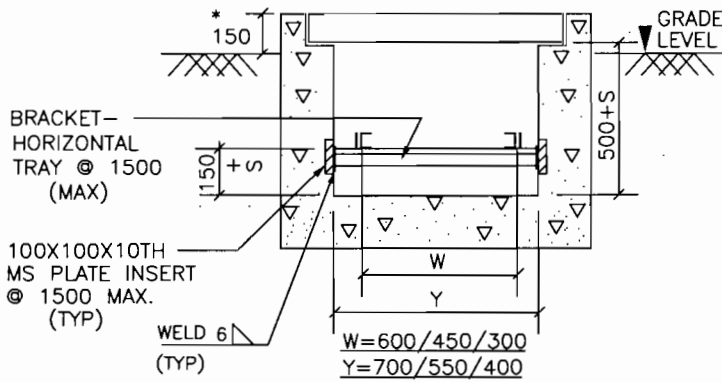
DEVELOPMENT CONSULTANTS PVT. LTD.
 CONSULTING ENGINEERS
 KOLKATA . MUMBAI . CHENNAI . NEW DELHI

JOB NO. K9213R SCALE : NTS
 DWG. NO. K9213R-DWG-E-0400 REV. 0
 SHT. 17

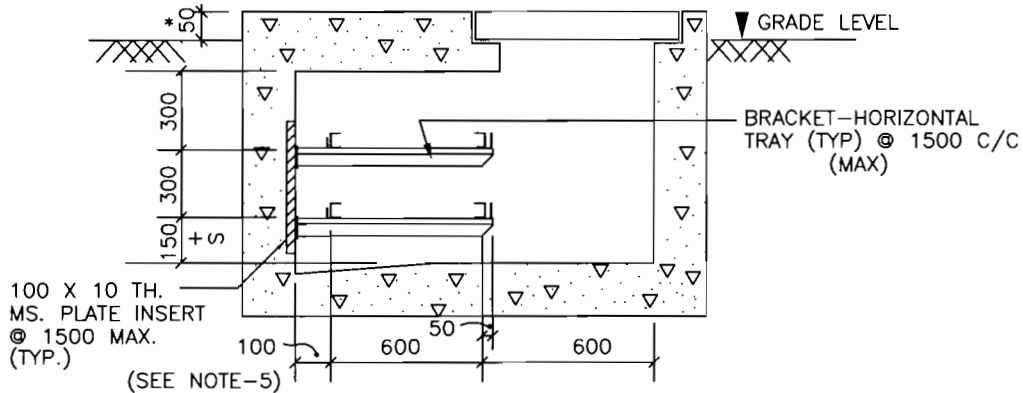
A4_DD (9-96) [210x297]

NOTES :-

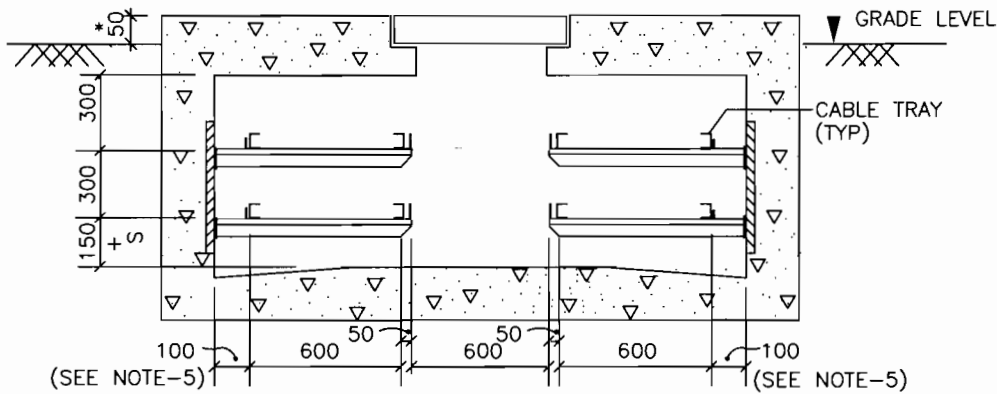
1. ALL DIMENSIONS ARE IN MM.
2. +S INDICATES DISTANCE TO MAINTAIN THE 'SLOPE' OF THE TRENCH.
3. MOUNTING ARRANGEMENT IN CABLE TRENCH TYPE-C,CC,DD ETC. SHALL BE SIMILAR.
4. FOR CABLE TRENCH GROUNDING REFER DWG.NO. DWG-E-0600.
5. FOR LONG TRENCH WITHOUT ANY INTERMEDIATE CABLE EXIT, THE GAP "200" MAY BE DISPENSED WITH. HOWEVER, THE SAME SHALL BE PROVIDED FOR AT LEAST 1500mm ON EITHER SIDE OF THE EXIT.
6. DIMENSION * VARIES.



TR - A



TR - B



TR - BB

**MOUNTING ARRANGEMENT
(IN CABLE TRENCH)**

FOR TENDERING ONLY

SKB	MS	BR	0	04.07.12
APPVD.	REVWD.	CHKD.	REV.	DATE

TITLE:	NOTES & DETAILS CABLING
PROJECT:	1x800 MW SUPERCRITICAL THERMAL POWER PLANT (UNIT #B AT WANAKBORI THERMAL POWER STATION, GUJARAT)

GSCL GUJARAT STATE ELECTRICITY CORPORATION LIMITED VADODARA, GUJARAT	
DEVELOPMENT CONSULTANTS PVT. LTD. CONSULTING ENGINEERS KOLKATA . MUMBAI . CHENNAI . NEW DELHI	
JOB NO.	K9213R
SCALE :	NTS
DWG. NO.	K9213R-DWG-E-0400
REV.	0
SHT.	18

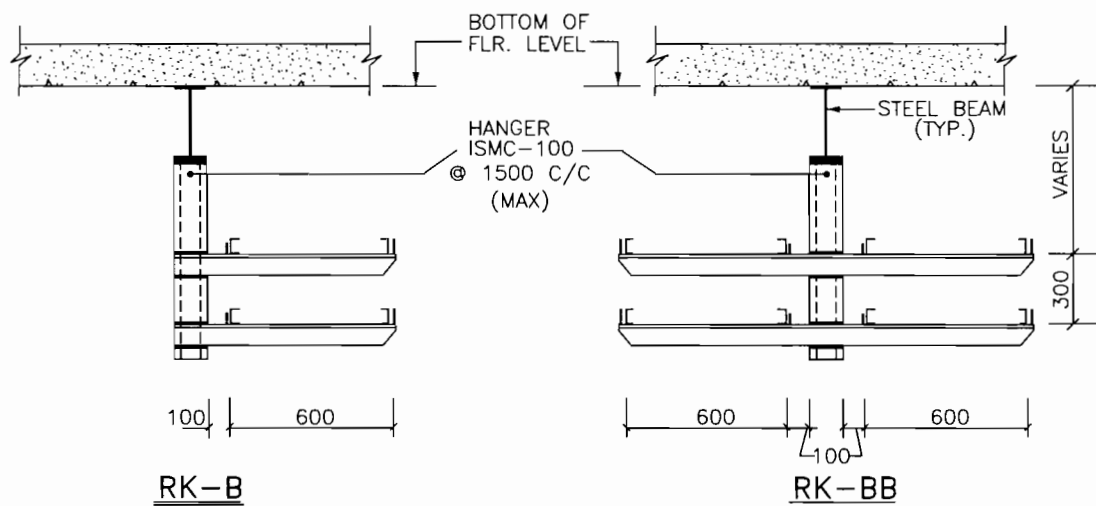
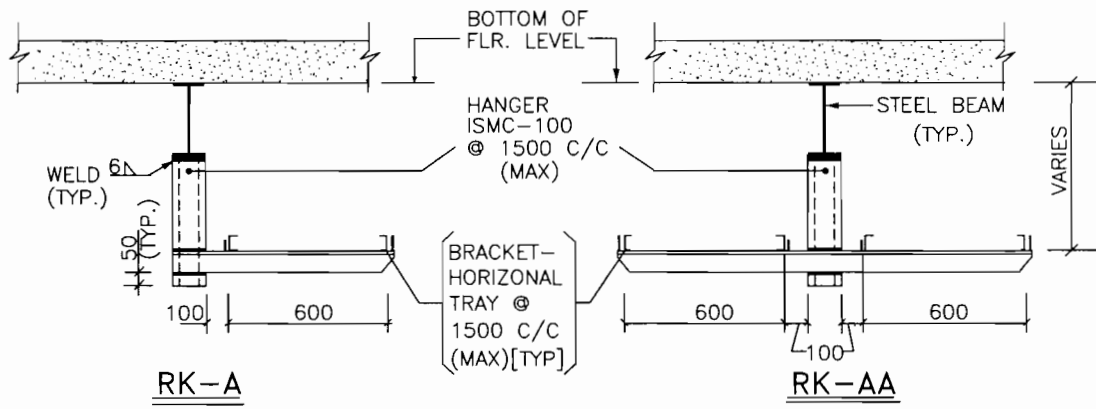


TABLE-1

RACK		NO. OF TIER
TYPE	WIDTH	
A1	450	1
B1	450	2
A2	300	1
B2	300	2


NOTES :-

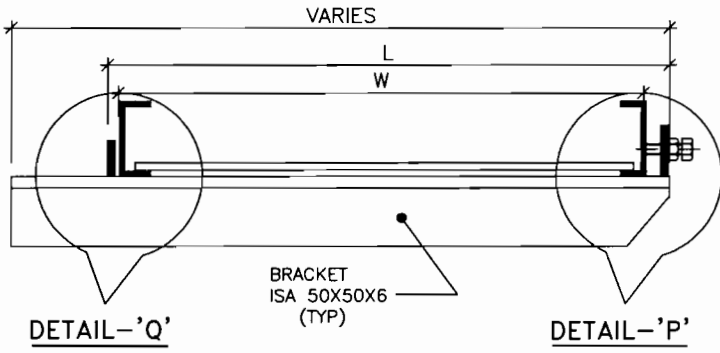
1. ALL DIMENSIONS ARE IN MM.
2. FOR OVERHEAD CABLE TRAY GROUNDING REFER DWG.NO. K9213R-DWG-E-0600
3. FOR RACK TYPE RK-C, RK-CC, RK-D, RK-DD ETC. THE ARRANGEMENT SHALL BE SIMILAR.

**MOUNTING ARRANGEMENT
(FROM BEAM)**

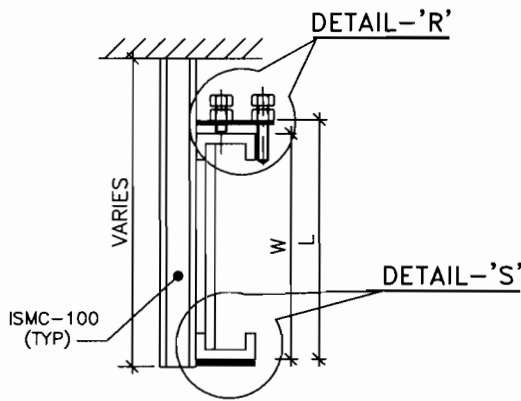
FOR TENDERING ONLY

GSECL GUJARAT STATE ELECTRICITY CORPORATION LIMITED
VADODARA, GUJARAT

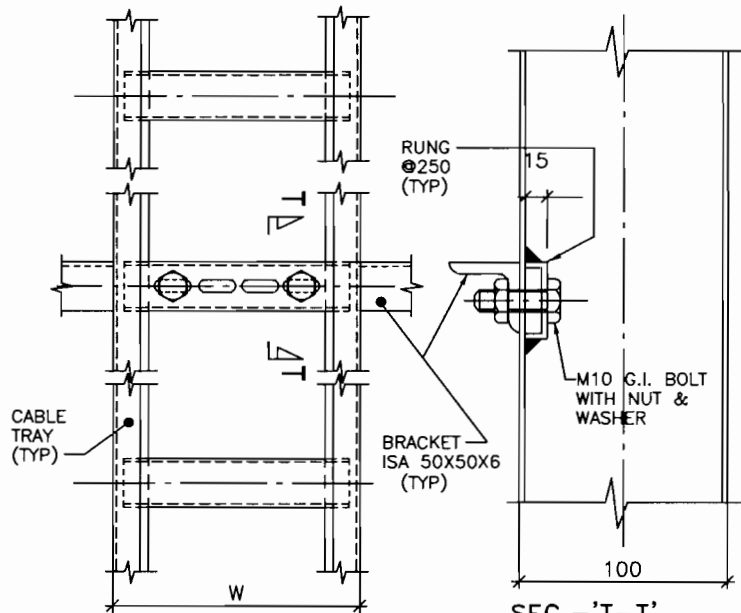
					TITLE: NOTES & DETAILS CABLING		 DEVELOPMENT CONSULTANTS PVT. LTD. CONSULTING ENGINEERS KOLKATA . MUMBAI . CHENNAI . NEW DELHI	
					PROJECT:		JOB NO. K9213R	
					1x800 MW SUPERCRITICAL THERMAL POWER PLANT (UNIT #8 AT WANAKBORI THERMAL POWER STATION, GUJARAT)		SCALE : NTS	
SKB	MS	BR	0	04.07.12			DWG. NO. K9213R-DWG-E-0400	
APPVD.	REVWD.	CHKD.	REV.	DATE			SHT. 19	
								REV. 0



BRACKET
(HORIZONTAL CABLE TRAY)

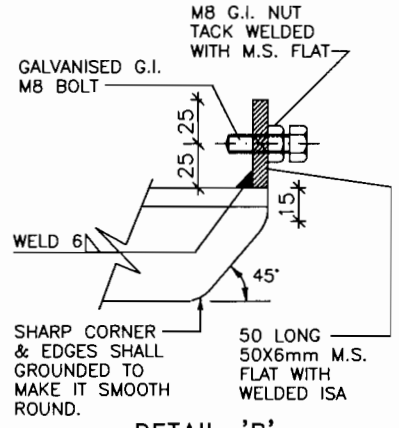


BRACKET
(VERTICAL CABLE TRAY)

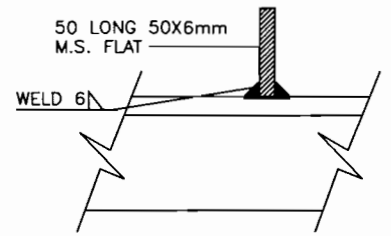


BRACKET
(VERTICAL CABLE SHAFT) **FOR TENDERING ONLY**

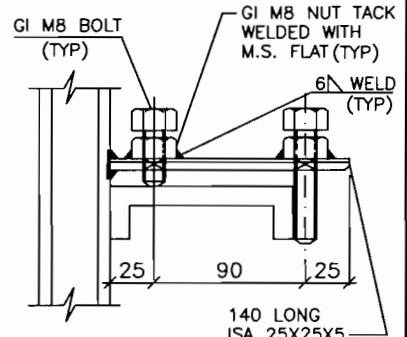
W	900	600	450	300
L	925	625	475	325



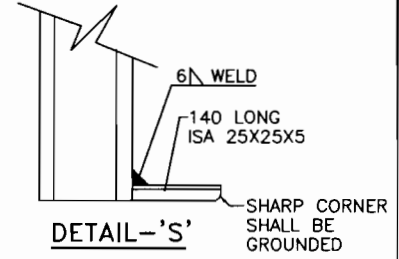
DETAIL-P



DETAIL-Q



DETAIL-R



DETAIL-S

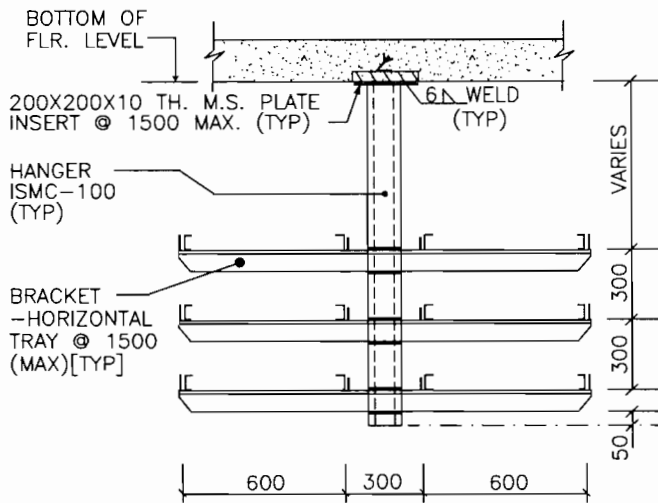
A4_DD (9-96) [210x297]

GSECL GUJARAT STATE ELECTRICITY CORPORATION LIMITED
VADODARA, GUJARAT

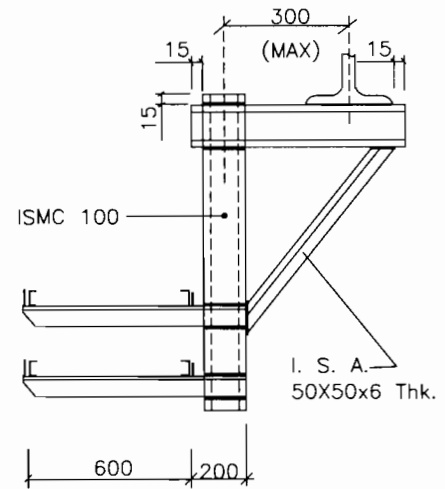
DEVELOPMENT CONSULTANTS PVT. LTD.
CONSULTING ENGINEERS
KOLKATA . MUMBAI . CHENNAI . NEW DELHI

JOB NO. K9213R SCALE : NTS
DWG. NO. K9213R-DWG-E-0400 REV. 0
SHT. 20

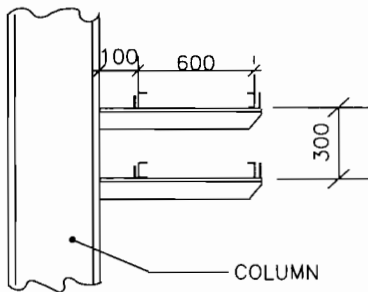
TITLE: NOTES & DETAILS CABLING				
PROJECT: 1x800 MW SUPERCRITICAL THERMAL POWER PLANT (UNIT #8 AT WANAKBORI THERMAL POWER STATION, GUJARAT)				
SKB	MS	BR	0	04.07.12
APPVD.	REVWD.	CHKD.	REV.	DATE



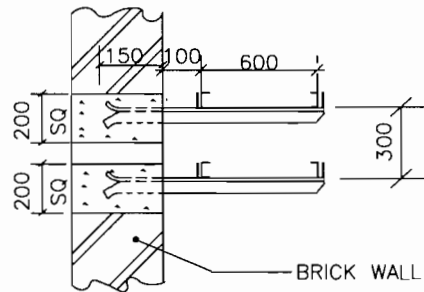
MOUNTING ARRANGEMENT
(FROM CEILING)



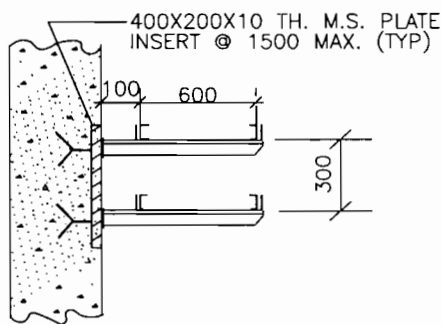
MOUNTING ARRANGEMENT
(FROM FLOOR BEAM)



MOUNTING ARRANGEMENT
(FROM STEEL COLUMN)



MOUNTING ARRANGEMENT
(FROM BRICK WALL)



MOUNTING ARRANGEMENT
(FROM CONCRETE COLUMN)

NOTES :-

1. ALL DIMENSIONS ARE IN MM.
2. THE NOS. OF TIER AND WIDTH OF EACH TRAY SHALL BE AS PER RACK TYPE NOS.
3. FOR OVERHEAD CABLE TRAY GROUNDING REFER DWG.NO. K9213R-DWG-E-0600.

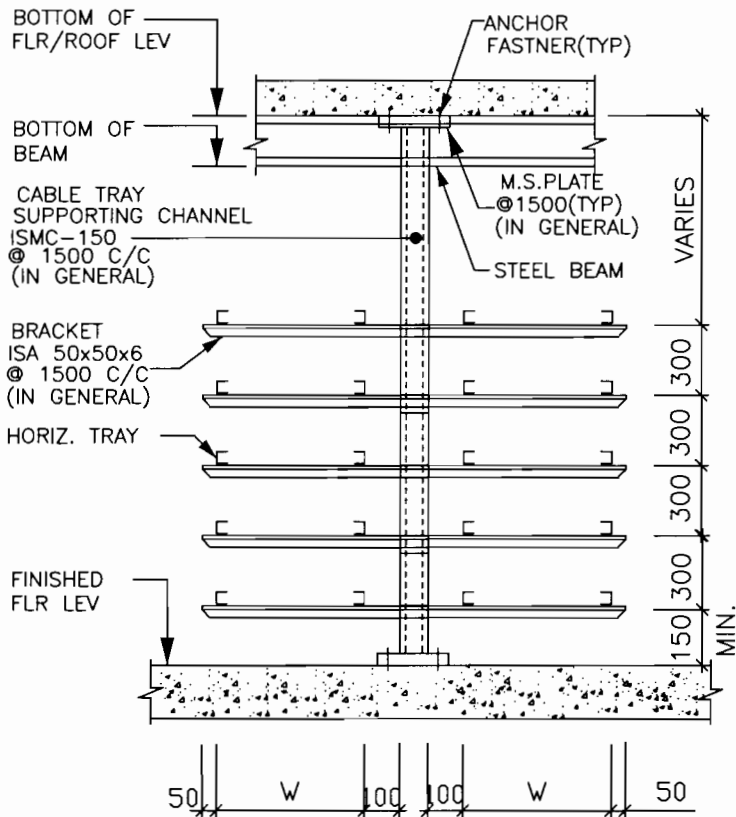
FOR TENDERING ONLY

GUJARAT STATE ELECTRICITY CORPORATION LIMITED
VADODARA, GUJARAT

DEVELOPMENT CONSULTANTS PVT. LTD.
CONSULTING ENGINEERS
KOLKATA . MUMBAI . CHENNAI . NEW DELHI

					TITLE: NOTES & DETAILS CABLING
					PROJECT: 1x800 MW SUPERCRITICAL THERMAL POWER PLANT (UNIT #8 AT WANAKBORI THERMAL POWER STATION, GUJARAT)
SKB	MS	BR	0	04.07.12	
APPVD.	REVWD.	CHKD.	REV.	DATE	


JOB NO.	K9213R	SCALE :	NTS
DWG. NO.	K9213R-DWG-E-0400	REV.	
		SHT.	21 / 0



MOUNTING ARRANGEMENT IN CABLE SPREADER ROOM
(SUPPORTED FROM CEILING & FLOOR)

FOR TENDERING ONLY

GSECL. GUJARAT STATE ELECTRICITY CORPORATION LIMITED
VADODARA, GUJARAT

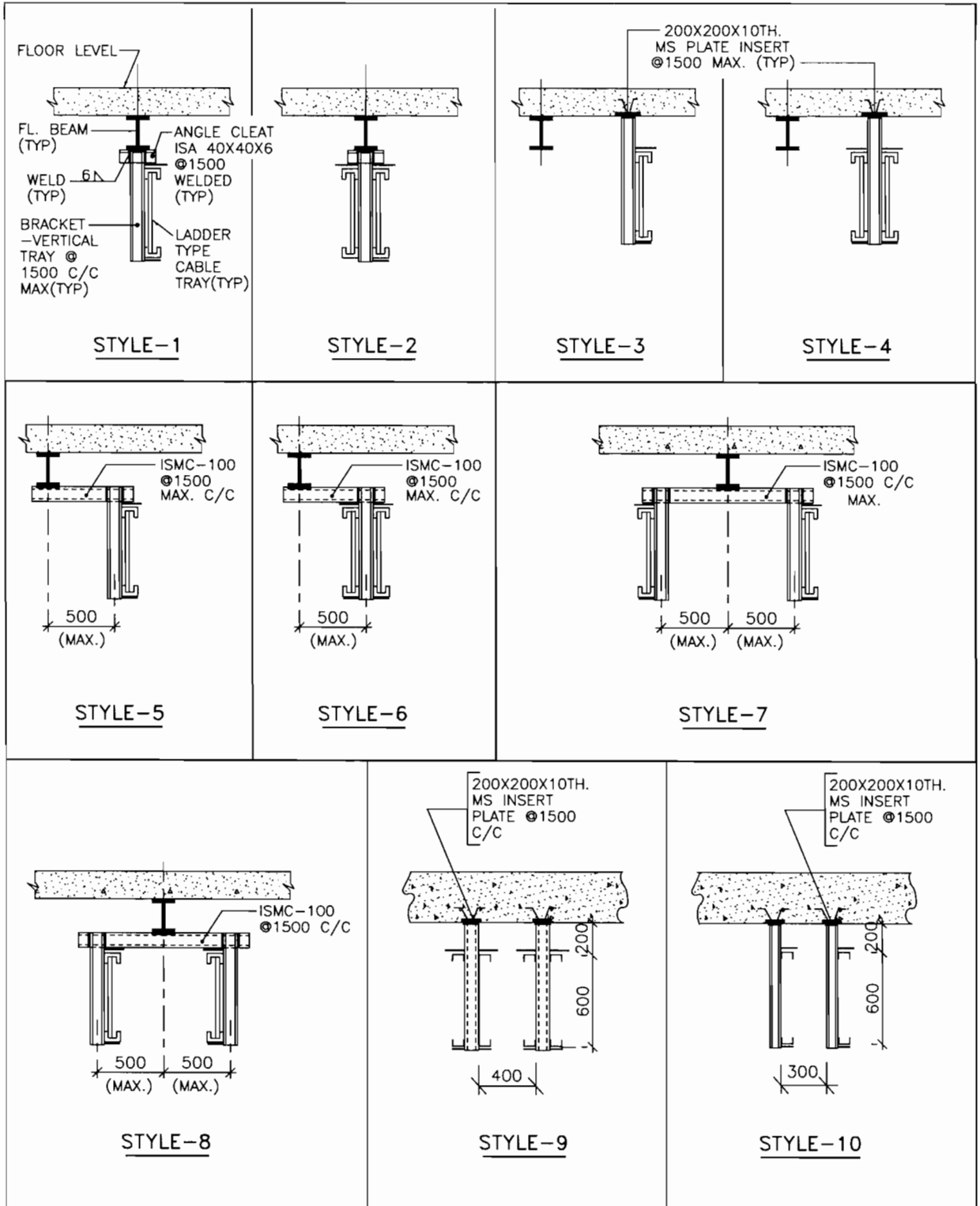
 DEVELOPMENT CONSULTANTS PVT. LTD.
CONSULTING ENGINEERS
KOLKATA . MUMBAI . CHENNAI . NEW DELHI

SKB	MS	BR	0	04.07.12	
APPVD.	REVWD.	CHKD.	REV.	DATE	

TITLE: NOTES & DETAILS
CABLING

PROJECT:
1x800 MW SUPERCRITICAL THERMAL POWER PLANT
(UNIT #8 AT WANAKBORI THERMAL POWER STATION, GUJARAT)

JOB NO. K9213R	SCALE : NTS
DWG. NO. K9213R-DWG-E-0400	REV. 0
SHT. 22	



MOUNTING ARRANGEMENT

(VERTICAL CABLE TRAY)

FOR TENDERING ONLY

GS ECL GUJARAT STATE ELECTRICITY CORPORATION LIMITED
VADODARA, GUJARAT

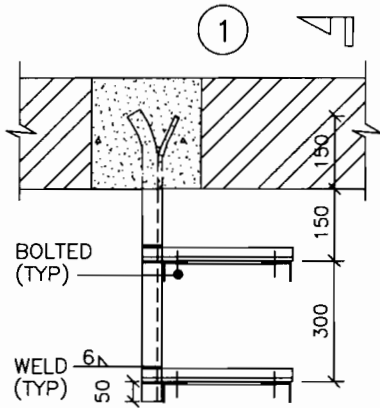
DEVELOPMENT CONSULTANTS PVT. LTD.
CONSULTING ENGINEERS
KOLKATA . MUMBAI . CHENNAI . NEW DELHI

SKB	MS	BR	0	04.07.12
APPVD.	REVWD.	CHKD.	REV.	DATE

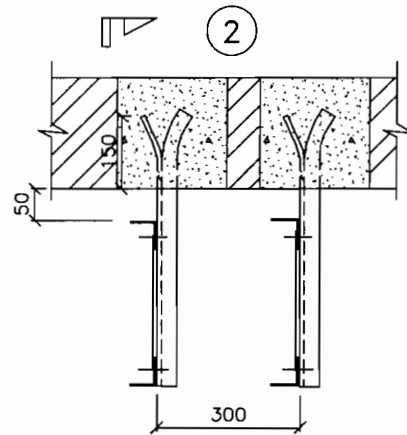
TITLE: NOTES & DETAILS
CABLING

PROJECT:
1x800 MW SUPERCRITICAL THERMAL POWER PLANT
(UNIT #8 AT WANAKBORI THERMAL POWER STATION, GUJARAT)

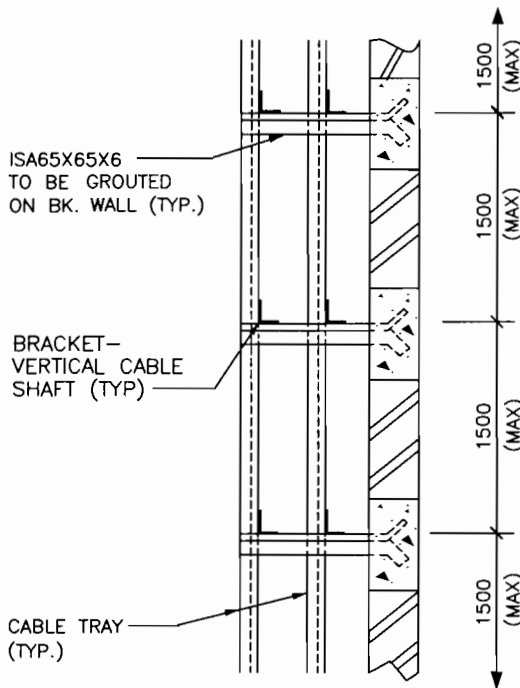
JOB NO. K9213R	SCALE : NTS
DWG. NO. K9213R-DWG-E-0400	REV. 0
SHT. 23	



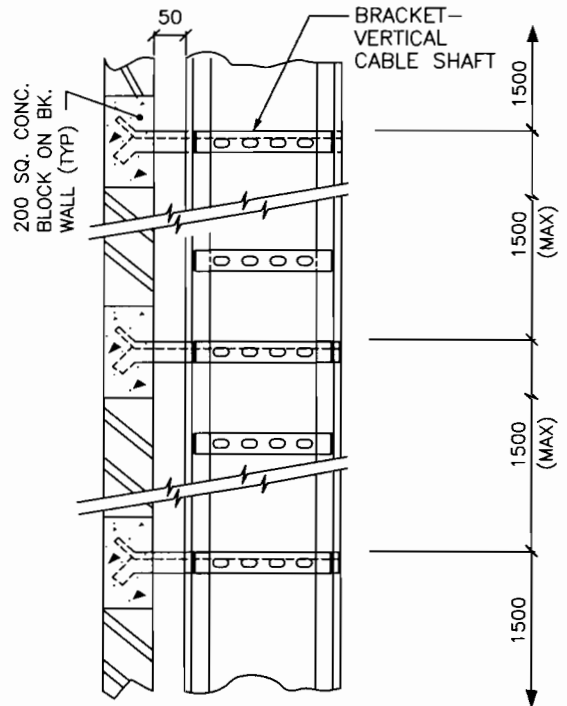
**PLAN
ALT.1**



**PLAN
ALT.2**



SEC:1-1



SEC:2-2

**MOUNTING ARRANGEMENT
(CABLE SHAFT ON BRICKWALL)**

NOTE

FOR CABLE SHAFT OF TYPE SH.-A, SH.-C, THE ARRANGEMENT SHALL BE SIMILAR TO SH.-B SHOWN HERE IN.

FOR TENDERING ONLY

**GSECL GUJARAT STATE ELECTRICITY CORPORATION LIMITED
VADODARA, GUJARAT**



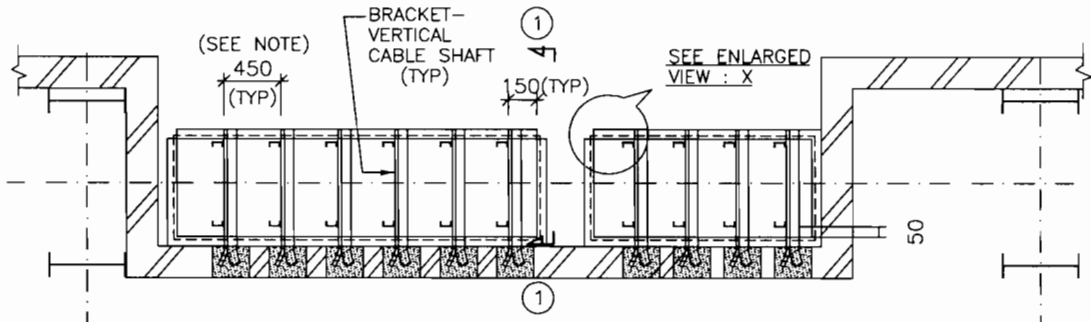
**DEVELOPMENT CONSULTANTS PVT. LTD.
CONSULTING ENGINEERS
KOLKATA . MUMBAI . CHENNAI . NEW DELHI**

SKB	MS	BR	0	04.07.12
APPVD.	REVWD.	CHKD.	REV.	DATE

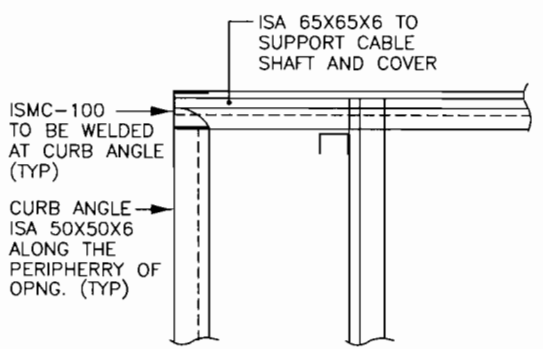
**TITLE: NOTES & DETAILS
CABLING**

**PROJECT:
1x800 MW SUPERCRITICAL THERMAL POWER PLANT
(UNIT #8 AT WAMAKBORI THERMAL POWER STATION, GUJARAT)**

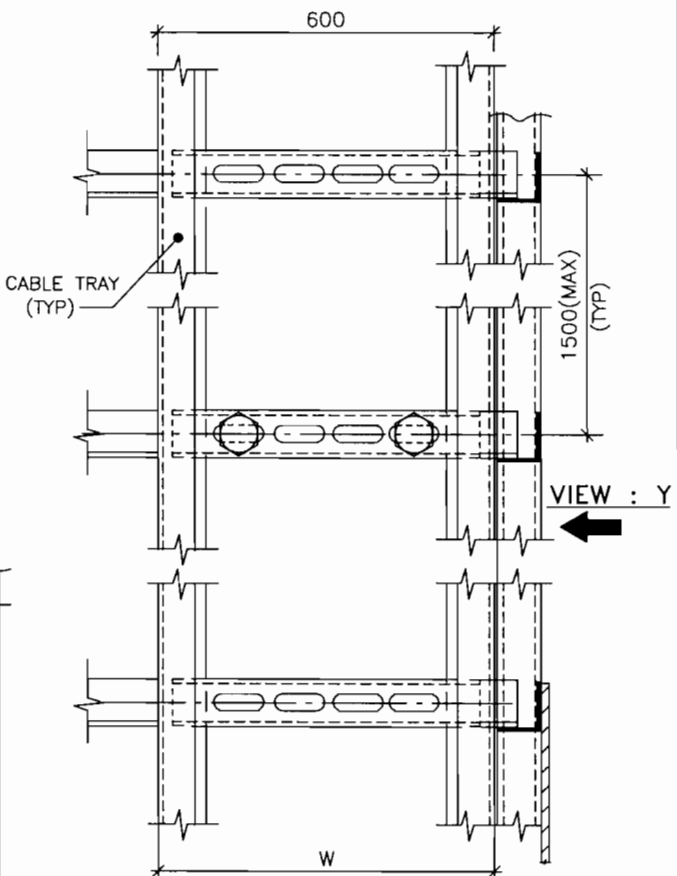
JOB NO. K9213R	SCALE : NTS
DWG. NO. K9213R-DWG-E-0400	REV. 0
SHT. 24	



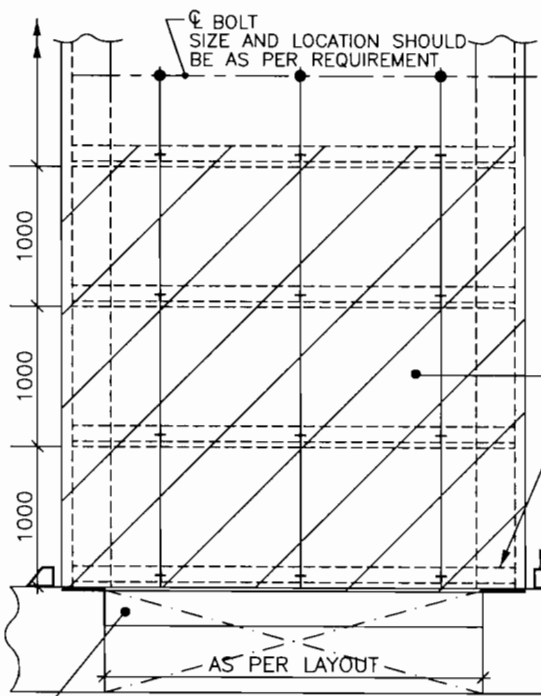
TYPICAL CABLE SHAFT DETAIL



ENLARGED VIEW : X
TYPICAL DETAILS OF CABLE SHAFT



SEC. ①



VIEW : Y

CURBE ANGLE 50X50X6

FOR TENDERING ONLY

NOTE:-
THE SPACING MAY BE REDUCED TO 300, IF CABLE TRAY IS APPLICABLE FROM BOTH SIDE.

MOUNTING ARRANGEMENT
(CABLE SHAFT MAIN PLANT)

GUJARAT STATE ELECTRICITY CORPORATION LIMITED
VADODARA, GUJARAT

DEVELOPMENT CONSULTANTS PVT. LTD.
CONSULTING ENGINEERS
KOLKATA . MUMBAI . CHENNAI . NEW DELHI

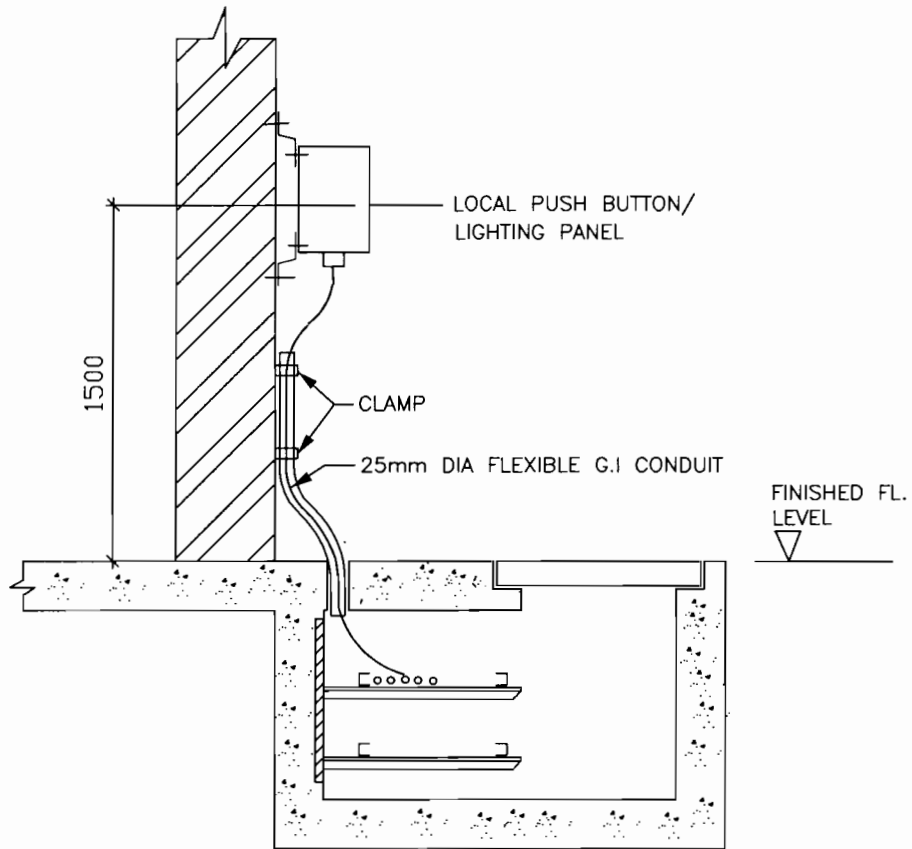
SKB	MS	BR	0	04.07.12
APPVD.	REVWD.	CHKD.	REV.	DATE

TITLE: NOTES & DETAILS
CABLING

PROJECT:
1x800 MW SUPERCRITICAL THERMAL POWER PLANT
(UNIT #8 AT WANAKBORI THERMAL POWER STATION, GUJARAT)

JOB NO.	K9213R	SCALE :	NTS
DWG. NO.	K9213R-DWG-E-0400	REV.	0
		SHT.	25

A4_DD (9-96) [210x297]



TYPICAL ARRANGEMENT OF FIXING
LOCAL PUSH BUTTON STATION/LIGHTING PANEL
ON WALL/COLOUMN

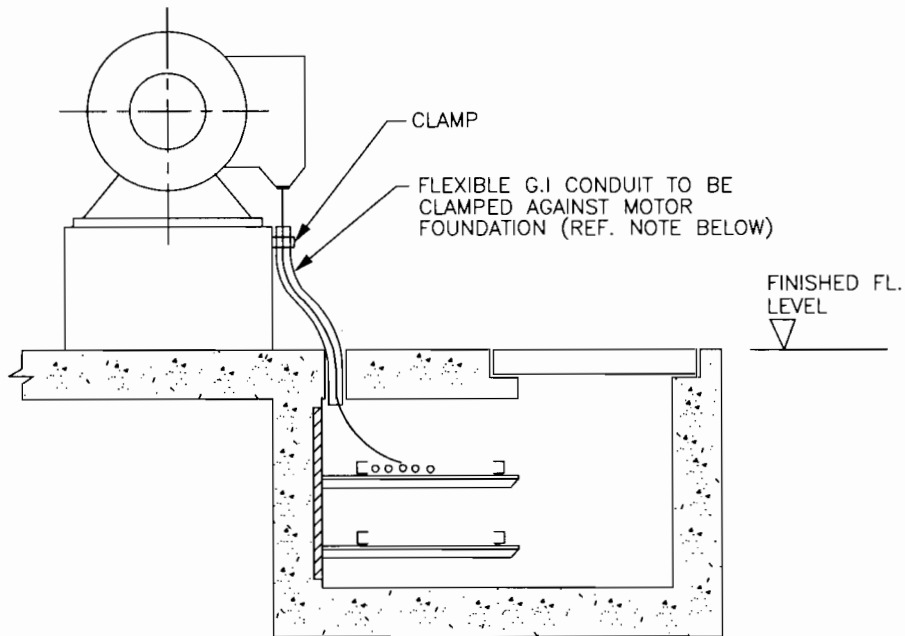
FOR TENDERING ONLY

GSECL GUJARAT STATE ELECTRICITY CORPORATION LIMITED
VADODARA, GUJARAT

DEVELOPMENT CONSULTANTS PVT. LTD.
CONSULTING ENGINEERS
KOLKATA . MUMBAI . CHENNAI . NEW DELHI

					TITLE: NOTES & DETAILS CABLING
					PROJECT: 1x800 MW SUPERCRITICAL THERMAL POWER PLANT (UNIT #8 AT WANAKBORI THERMAL POWER STATION, GUJARAT)
SKB	MS	BR	0	04.07.12	
APPVD.	REVWD.	CHKD.	REV.	DATE	

JOB NO. K9213R	SCALE : NTS
DWG. NO. K9213R-DWG-E-0400	REV. 0
SHT. 26	

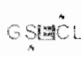



TYPICAL ARRANGEMENT OF CABLE
CONNECTION TO MOTOR

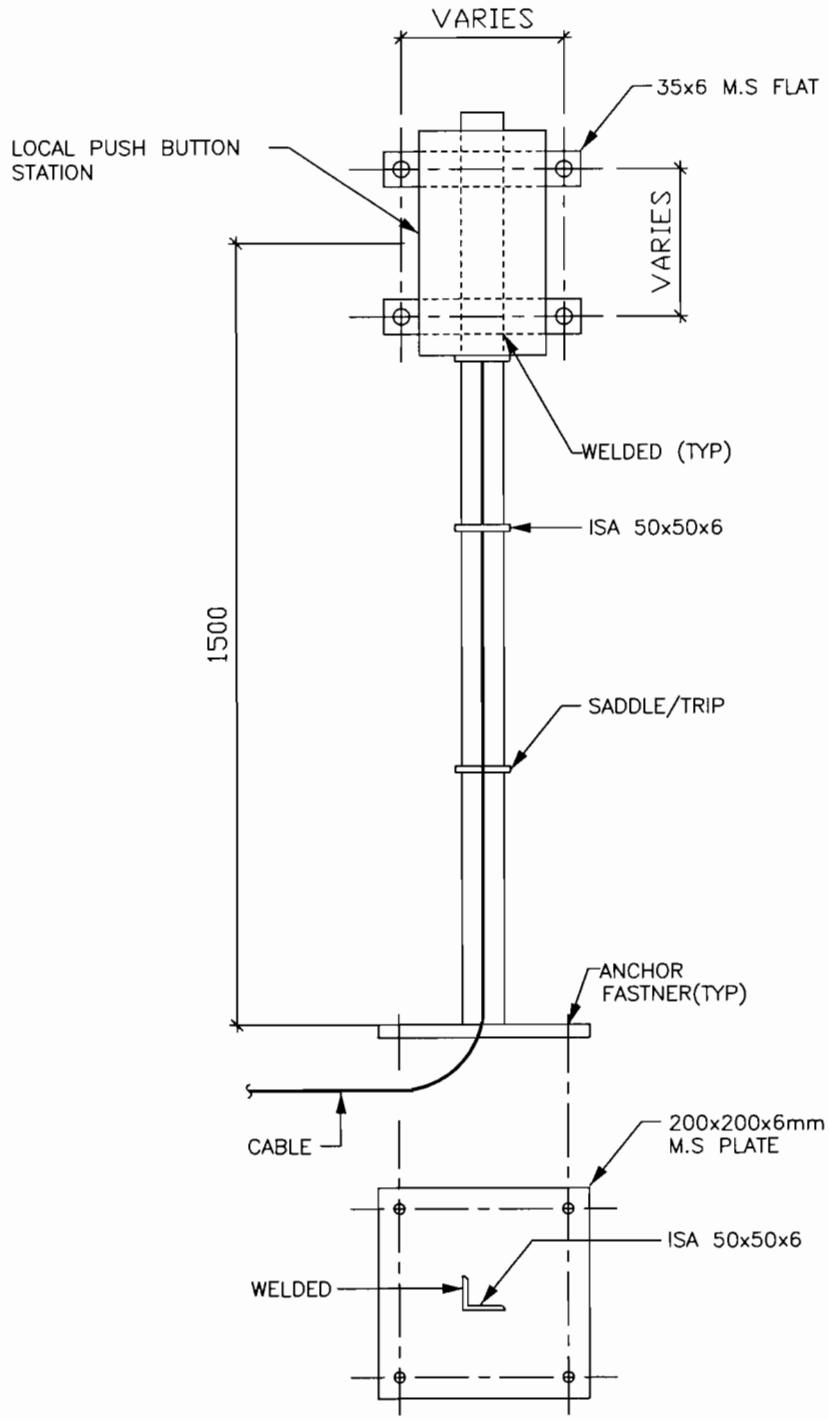
NOTES:

- 1.. FLEXIBLE G.I CONDUIT IS SHOWN IN THIS DRAWINGS DEPENDING ON THE SIZE AND TYPE OF CABLES RIGID CONDUITS MAY BE USED AND THE SAME SHALL BE EXTENDED UP TO MOTOR TERMINAL BOX.

FOR TENDERING ONLY


GUJARAT STATE ELECTRICITY CORPORATION LIMITED
 VADODARA, GUJARAT

					TITLE: NOTES & DETAILS CABLING	 DEVELOPMENT CONSULTANTS PVT. LTD. CONSULTING ENGINEERS KOLKATA . MUMBAI . CHENNAI . NEW DELHI
SKB	MS	BR	0	04.07.12		
APPVD.	REVWD.	CHKD.	REV.	DATE		



MOUNTING ARRANGEMENT OF LOCAL
PUSH BUTTON STN. ON FLOOR

FOR TENDERING ONLY

GSECL GUJARAT STATE ELECTRICITY CORPORATION LIMITED
VADODARA, GUJARAT

DEVELOPMENT CONSULTANTS PVT. LTD.
CONSULTING ENGINEERS
KOLKATA . MUMBAI . CHENNAI . NEW DELHI

JOB NO. K9213R SCALE : NTS
DWG. NO. K9213R-DWG-E-0400 REV. 0
SHT. 28

					TITLE: NOTES & DETAILS CABLING	
					PROJECT: 1x800 MW SUPERCRITICAL THERMAL POWER PLANT (UNIT #8 AT WANAKBORI THERMAL POWER STATION, GUJARAT)	
SKB	MS	BR	0	04.07.12		
APPVD.	REVWD.	CHKD.	REV.	DATE		

A4_DD (9-96) [210x297]

SUITABLE LOCATION FOR THIS VERTICAL SUPPORT TO BE DECIDED AT SITE

ISA 50x50x6

VERTICAL ANGLE TO BE SUPPORTED RIGIDLY FROM THE CABLE TRAY OVER AND/OR BY OTHER STRUCTURAL MEMBERS IN A NEAT AND WORKMAN LIKE MANNER.

LOCAL P.B STN.

CABLE/STO BE CLAMPED WITH THE ANGLE BY SUITABLE GALVANISED U-BOLTS @1000mm

1500

MOTOR FOUNDATION

ANCHOR FASTNER

G.I.PIPE EMBEDDED IN FLOOR

TYPICAL ARRANGEMENT OF CABLE CONNECTION (BOTTOM ENTRY) ON MOTOR.

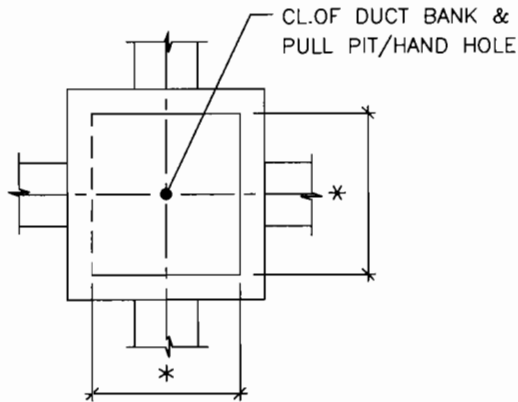
FOR TENDERING ONLY

GSECL GUJARAT STATE ELECTRICITY CORPORATION LIMITED
VADODARA, GUJARAT

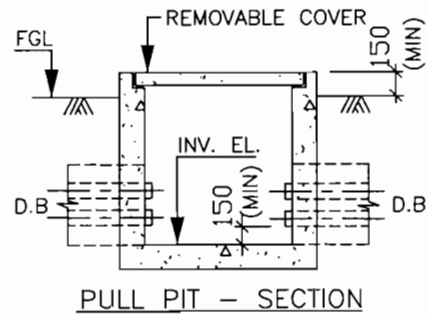
DC DEVELOPMENT CONSULTANTS PVT. LTD.
CONSULTING ENGINEERS
KOLKATA . MUMBAI . CHENNAI . NEW DELHI

					TITLE: NOTES & DETAILS CABLING	
					PROJECT: 1x800 MW SUPERCRITICAL THERMAL POWER PLANT (UNIT #8 AT WANAKBORI THERMAL POWER STATION, GUJARAT)	
SKB	MS	BR	0	04.07.12		
APPVD.	REVWD.	CHKD.	REV.	DATE		

JOB NO. K9213R	SCALE : NTS
DWG. NO. K9213R-DWG-E-0400	REV. 0
SHT. 29	

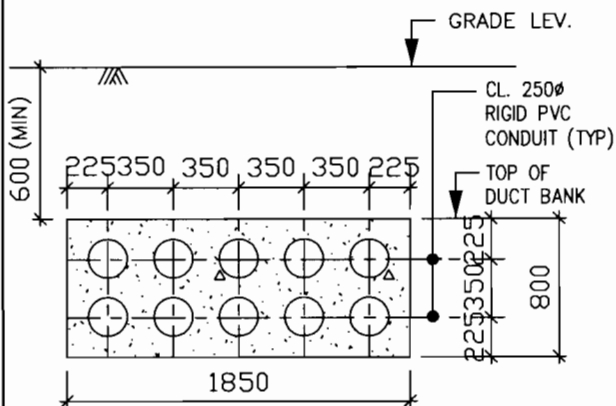


PULL PIT/HAND HOLE - PLAN

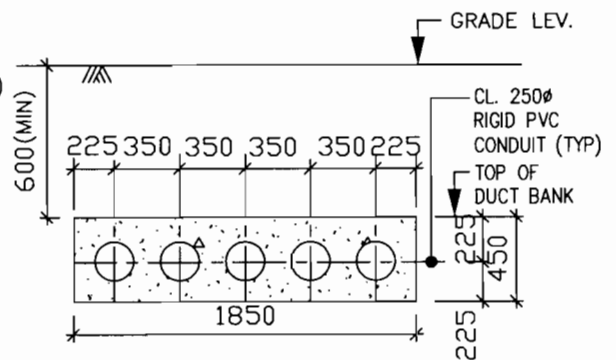


PULL PIT - SECTION

* - CONFIGURATION OF DUCT BANK AND SIZE OF PULL PIT SHALL BE AS PER LAYOUT REQUIREMENT AND SHALL BE MENTIONED IN THE RESPECTIVE ELECTRICAL LAYOUT



TYPICAL DETAIL OF CONCRETE ENCASED DUCT BANK



TYPICAL DETAIL OF CONCRETE ENCASED DUCT BANK

FOR TENDERING ONLY

GS ECL GUJARAT STATE ELECTRICITY CORPORATION LIMITED
VADODARA, GUJARAT

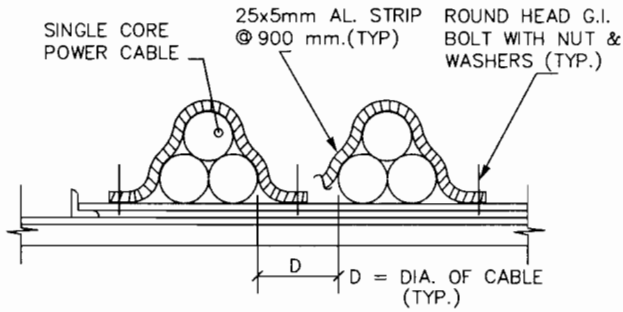
DEVELOPMENT CONSULTANTS PVT. LTD.
CONSULTING ENGINEERS
KOLKATA . MUMBAI . CHENNAI . NEW DELHI

SKB	MS	BR	0	04.07.12
APPVD.	REVWD.	CHKD.	REV.	DATE

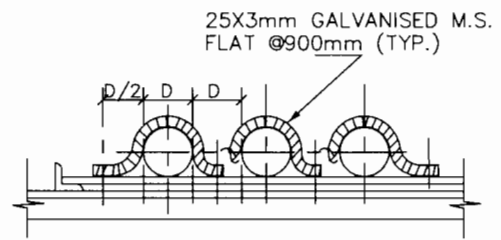
TITLE: NOTES & DETAILS
CABLING

PROJECT:
1x800 MW SUPERCRITICAL THERMAL POWER PLANT
(UNIT #8 AT WANAKBORI THERMAL POWER STATION, GUJARAT)

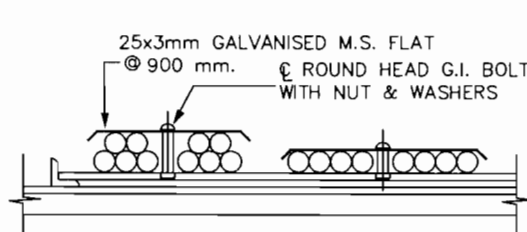
JOB NO.	K9213R	SCALE :	NTS
DWG. NO.	K9213R-DWG-E-0400	REV.	0
		SHT.	30



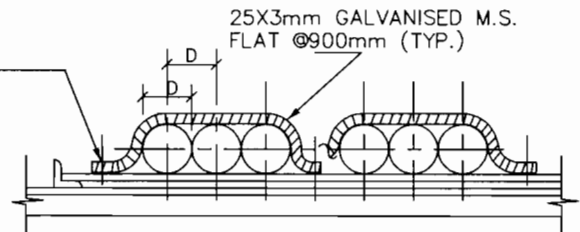
CABLE CLAMPS IN TREFOIL FORMATION FOR SINGLE CORE POWER CABLES



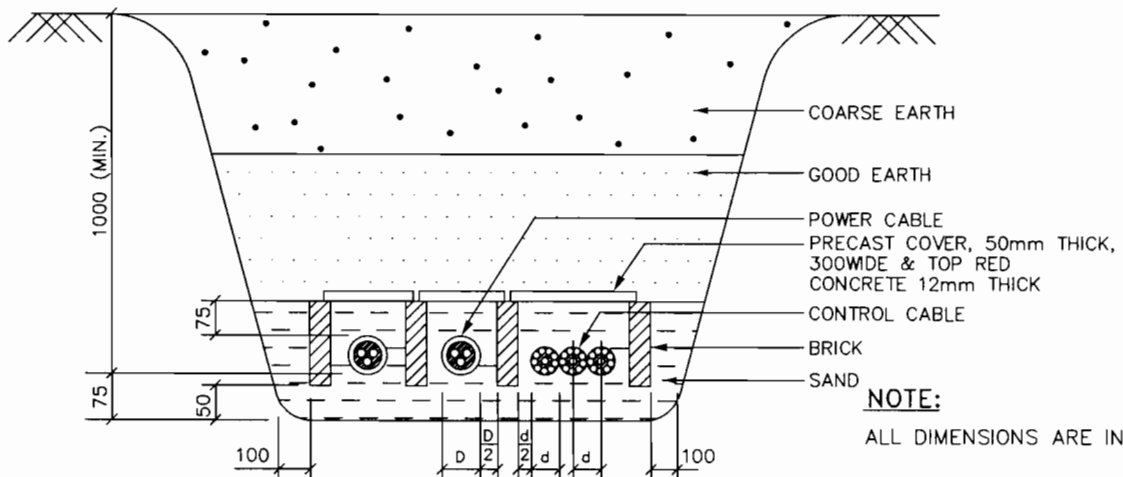
CABLE CLAMPS FOR MULTICORE POWER CABLES (NOT TOUCHING EACH OTHER)



CLAMPING ARRANGEMENT OF CONTROL CABLES



CABLE CLAMPS FOR MULTICORE POWER CABLES (TOUCHING EACH OTHER)



BURIED CABLE LAYING DETAILS

NOTE:
ALL DIMENSIONS ARE IN 'MM'.

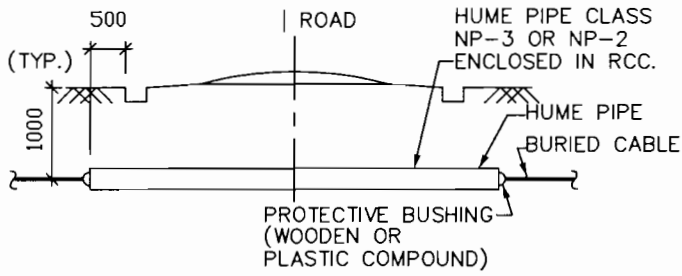
FOR TENDERING ONLY

GS ECL GUJARAT STATE ELECTRICITY CORPORATION LIMITED
VADODARA, GUJARAT

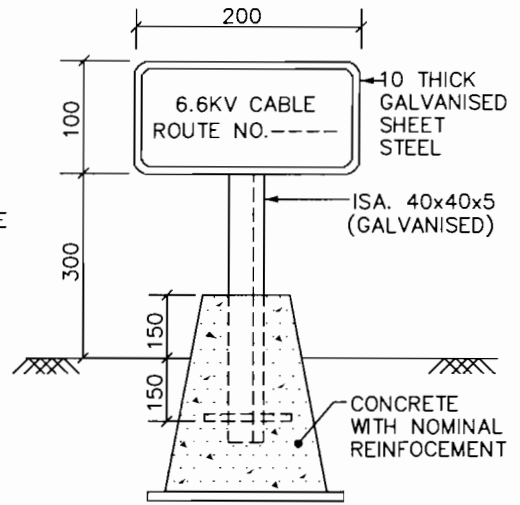
DEVELOPMENT CONSULTANTS PVT. LTD.
CONSULTING ENGINEERS
KOLKATA . MUMBAI . CHENNAI . NEW DELHI

					TITLE: NOTES & DETAILS CABLING
					PROJECT: 1x800 MW SUPERCRITICAL THERMAL POWER PLANT (UNIT #8 AT WANAKBORI THERMAL POWER STATION, GUJARAT)
SKB	MS	BR	0	04.07.12	
APPVD.	REVWD.	CHKD.	REV.	DATE	

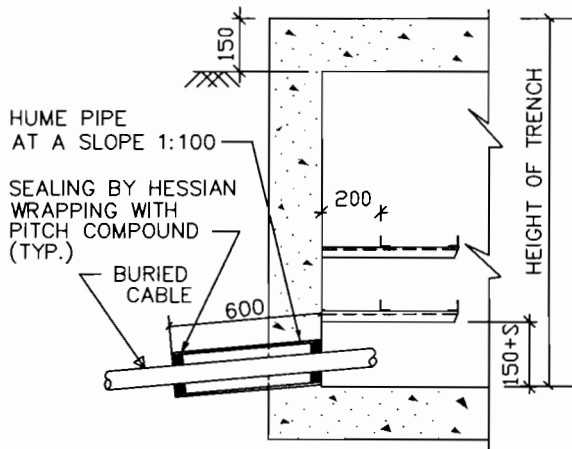
JOB NO.	K9213R	SCALE :	NTS
DWG. NO.	K9213R-DWG-E-0400	REV.	0
		SHT.	31



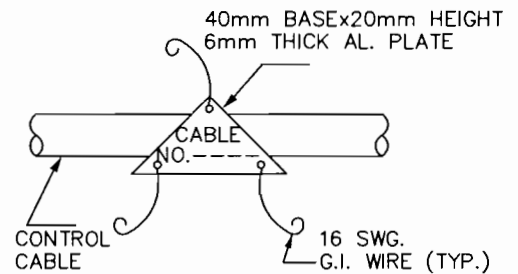
ROAD CROSSING OF BURIED CABLE



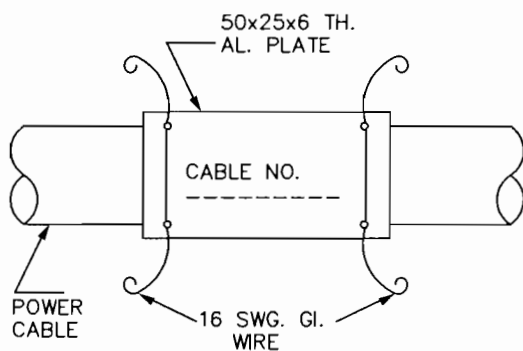
CABLE ROUTE MAKER (VOLTAGE TO BE MARKED)



TYP. DETAILS OF BURIED CABLE ENTRY TO BLDG. OR CABLE TRENCH



CABLE TAG CONTROL CABLE

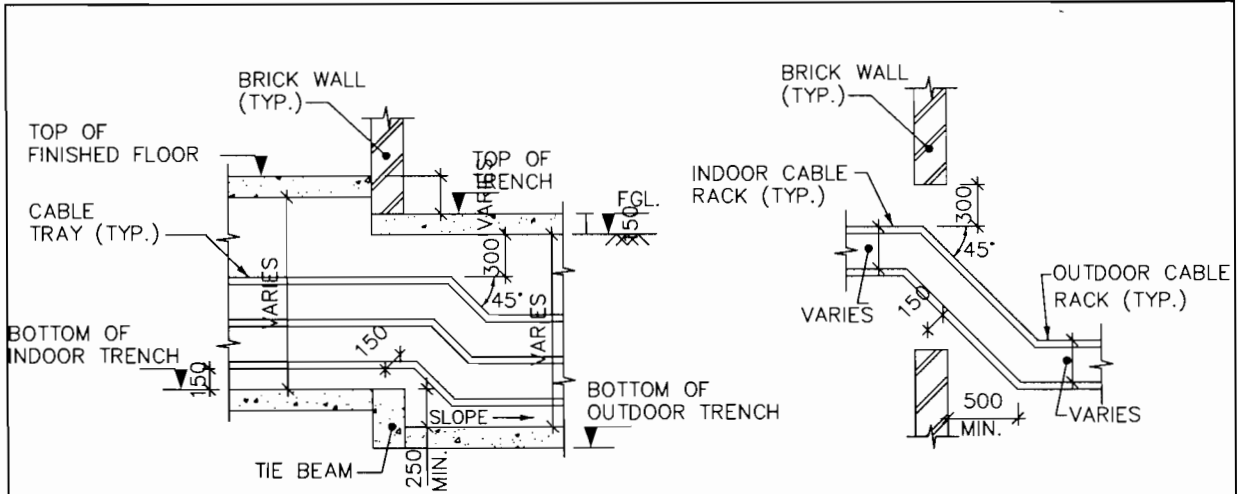


CABLE TAG POWER CABLE

NOTE:
ALL DIMENSIONS ARE IN 'MM'.

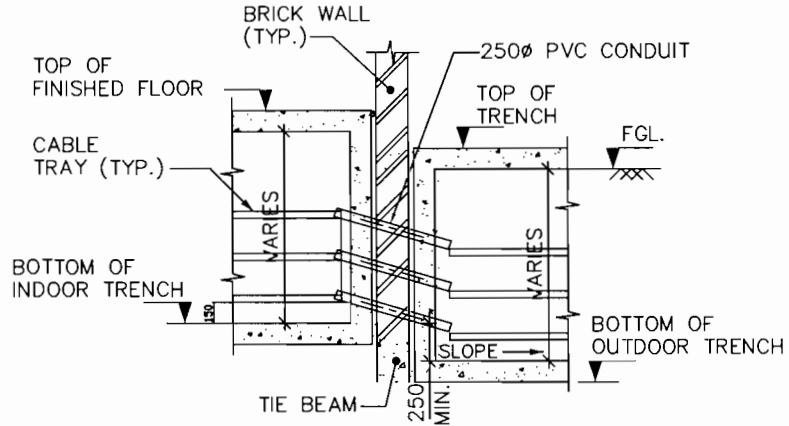
FOR TENDERING ONLY

					GS ECL GUJARAT STATE ELECTRICITY CORPORATION LIMITED VADODARA, GUJARAT	
					DC DEVELOPMENT CONSULTANTS PVT. LTD. CONSULTING ENGINEERS KOLKATA . MUMBAI . CHENNAI . NEW DELHI	
TITLE: NOTES & DETAILS CABLING					JOB NO. K9213R	SCALE : NTS
SKB	MS	BR	0	04.07.12	PROJECT: 1x800 MW SUPERCRITICAL THERMAL POWER PLANT	
APPVD.	REVVD.	CHKD.	REV.	DATE	(UNIT #8 AT WANAKBORI THERMAL POWER STATION, GUJARAT)	
					DWG. NO. K9213R-DWG-E-0400	REV. 0
					SHT. 32	

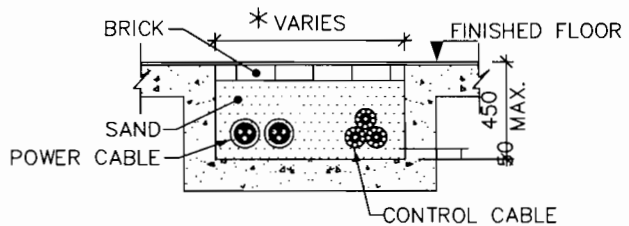


TYPICAL DETAILS OF CABLE TRENCH ENTRY TO BUILDING

TYPICAL DETAILS OF CABLE RACK ENTRY TO BUILDINGS



TYPICAL DETAILS OF CABLE TRENCH ENTRY TO BUILDINGS THRU' CONDUITS



CABLE LAYING IN SHALLOW TRENCH (INDOOR)

NOTE:

1. ALL DIMENSIONS ARE IN 'MM'.
2. THE PORTION OF FLOOR ABOVE THE TRENCH MARKED '*' SHALL BE FINISHED WITH WEAK MORTER.

FOR TENDERING ONLY

GS ECL GUJARAT STATE ELECTRICITY CORPORATION LIMITED
VADODARA, GUJARAT

DEVELOPMENT CONSULTANTS PVT. LTD.
CONSULTING ENGINEERS
KOLKATA . MUMBAI . CHENNAI . NEW DELHI

					TITLE: NOTES & DETAILS CABLING
					PROJECT: 1x800 MW SUPERCRITICAL THERMAL POWER PLANT (UNIT #8 AT WANAKBORI THERMAL POWER STATION, GUJARAT)
SKB	MS	BR	0	04.07.12	
APPVD.	REVWD.	CHKD.	REV.	DATE	

JOB NO.	K9213R	SCALE :	NTS
DWG. NO.	K9213R-DWG-E-0400	REV.	0
		SHT.	33

CABLE TRAY NUMBERING

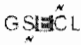

AREA CODE

- SW = SWITCHYARD/SWITCHYARD CONTROL ROOM
- X = TRANSFORMER YARD
- HT = HT SWITCHGEAR BUILDING
- G = POWER HOUSE GROUND FLOOR
- Z = POWER HOUSE MEZZ. FLOOR
- T = POWER HOUSE BUILDING OPERATING FLOOR
- P = BOILER PLATFORM
- B = BOILER AREA
- BP = BOILER PLATFORM
- EP = ESP BUILDING
- DM = DM PLANT AREA
- CA = COAL HANDLING AREA
- CW = CW PUMP HOUSE
- CT = COOLING TOWER
- FW = FIRE WATER PUMP HOUSE
- CC = COAL HANDLING SWITCHGEAR & CONTROL ROOM
- CH = CRUSHER HOUSE SWITCHGEAR ROOM
- FO = FUEL OIL PUMP HOUSE

LAYING CODE

- RK = OVERHEAD TRAYS
- TR = UNDER GROUND TRAYS
- DB = DUCT BANKS
- CS = CABLE SHAFTS
- UG = UNDER GROUND LAYING
- CT = CABLE TUNNEL

FOR TENDERING ONLY

					 GUJARAT STATE ELECTRICITY CORPORATION LIMITED VADODARA, GUJARAT	
					 DEVELOPMENT CONSULTANTS PVT. LTD. CONSULTING ENGINEERS KOLKATA . MUMBAI . CHENNAI . NEW DELHI	
					TITLE: NOTES & DETAILS CABLING	
					PROJECT: 1x800 MW SUPERCRITICAL THERMAL POWER PLANT (UNIT #8 AT WANAKBORI THERMAL POWER STATION, GUJARAT)	
SKB	MS	BR	0	04.07.12	JOB NO. K9213R	SCALE : NTS
APPVD.	REVWD.	CHKD.	REV.	DATE	DWG. NO. K9213R-DWG-E-0400	REV. SHT. 34 0